



**Title:** 75th anniversary 1923-1998, Agricultural & Biological Engineering Department, University of Florida

**URL:** <http://ufdcweb1.uflib.ufl.edu/UF00072009/00001>

**Site:** University of Florida Digital Collections

# AGRICULTURAL AND BIOLOGICAL ENGINEERING DEPARTMENT



75  
YEARS

**1923 - 1998**



UNIVERSITY OF FLORIDA

*75th ANNIVERSARY*

*1923 - 1998*

AGRICULTURAL & BIOLOGICAL ENGINEERING  
DEPARTMENT

UNIVERSITY of FLORIDA

Gainesville, Florida 32611-0570

November, 1998

“The hand is the cutting edge of the mind”

*The Ascent of Man*

Jacob Bronowski, 1975

## TABLE OF CONTENTS

- Preface
- Dedication
- Anniversary Committee Members
- Welcome from Department Chair
- Anniversary Programs
  - General Program
  - Anniversary Ceremony
- Introduction
- Major Events Related to Agricultural Engineering
- Department Photographs
- Agricultural & Biological Engineering Lists
  - Department Chairs
  - Faculty
  - Staff
  - Alumni
- Agricultural & Biological Engineering Scholarships
  - Florida Section ASAE Scholarship
  - Marlin Eller Memorial/MWI Scholarship
  - Dalton S. Harrison/Florida Irrigation Society Scholarship
  - Rush E. Choate Scholarship
  - John B. Boy/US Sugar Scholarship
- Curricula
  - 1952 Bachelor of Agricultural Engineering
  - 1973 Bachelor of Science in Agricultural Engineering
  - 1973 Bachelor of Science in Agriculture, Major in Mechanized Agriculture
  - 1998 Bachelor of Science in Agricultural & Biological Engineering
  - 1998 Bachelor of Science in Agricultural Operations Management
- Florida Section ASAE
  - History
  - List of Officers
  - Awards
    - Section Chair
    - Young Engineer
    - Distinguished Achievement
    - Outstanding Service
    - Outstanding Senior
  - Photographs

## PREFACE

This document is written to provide a historical record for alumni and friends of the Agricultural & Biological Engineering Department at the University of Florida. In July, 1998, Dr. Direlle Baird, ABE Chair appointed the 75th Anniversary Committee to prepare a document and to plan public events to commemorate this milestone in our history. At the first meeting the committee agreed to schedule events on November 6 & 7 for this purpose. The focus on Friday evening at the Austin Cary Conference Center would be an alumni reunion. Saturday morning at the New Engineering building on campus would be dedicated to a formal ceremony with presentations from various sectors of the university and outside communities. Saturday afternoon at Lake Wauberg would host an informal cookout and activities for everyone, to take the place of our usual FallFest in the department. It was also decided that the document would not list research and extension projects, but would rather provide lists of alumni, faculty, staff, scholarships, and other items of interest to the broader community.

In planning the events we have invited a large number of people (alumni, present and former faculty, present and former staff, students, administrators, and friends) and involved numerous alumni and others in the program. It is our desire that this be a joyous occasion to renew old acquaintances and make new friends. Any profession needs to have mechanisms for networking, and we hope these events help to serve that purpose.

I wish to thank several individuals for their input and hard work. Members of the committee gave their time in several meetings. Rush Choate has been particularly helpful in providing a link to everyone who has been a part of this department and in providing copies of numerous documents and photographs. To Dr. Direlle Baird for his leadership and extraordinary effort to make the program a success. To Dawn Mendoza and several staff for their hours of devoted work. Heather Pirozzoli graciously consented to serve as MC for Saturday morning. Vice Presidents Jack Ohanian and Michael Martin offer perspectives from UF administration. To several individuals for scholarship plaque presentations and reflections on the department. Students and staff have made the Saturday afternoon social possible.

We hope that this document, along with the one prepared in 1973 for the 50th anniversary, will provide resource material for the centennial celebration in 2023. An extensive set of photographs are planned during this celebration. By the time of the centennial the Florida population may have exceeded 25,000,000 and UF enrollment may have exceeded 50,000 students. Academic curricula are likely to be very different from today, since this represents an unending challenge. If past history is any guide, then people will live in a highly engineered society very different from that of today. This will present both challenges and opportunities for our profession and this department. Teaching, research, and service components of the department must always adapt to help provide the goods and services demanded by society.

Finally, any oversights or errors in this document were not intentional and for those I ask your forbearance.

*Allen R. Overman*  
Professor & Chair 75th Anniversary Committee  
November, 1998

## DEDICATION

This document is dedicated to the faculty and staff of the Agricultural Engineering Department at the University of Florida in 1948. These include:

*Frazier Rogers, Head*

*Rush Choate*

*Jack Johnson*

*Mostella Myers*

*Ray Pettis*

*Tom Skinner*

*Dorthea Musk, Secretary*

The Agricultural & Biological Engineering Department and the University of Florida owe a debt of gratitude to these individuals for their pioneer work in building programs in teaching, extension, and research for this discipline in Florida. Careers of many students were shaped under the guidance of these faculty. We also salute the accomplishments of our alumni from the past 75 years.

75th Anniversary Committee  
Agricultural & Biological Engineering Department  
University of Florida

*Allen Overman, Chair*

*Direlle Baird*

*Kelly Brock*

*Rush Choate*

*Richard Fluck*

*Byron French*

*Jerry Gaffney*

*Dalton Harrison*

*Dawn Mendoza*

*Bill Reck*

*Larry Shaw*

*Glen Smerage*

*Jodie Whitney*



## WELCOME

I take great pleasure in welcoming you to the 75th Anniversary of the Department of Agricultural and Biological Engineering. The contributions of the 126 faculty (including 32 USDA faculty) and 160 staff members associated with the Department, since its beginning 75 years ago, are very significant and have helped shape the lives and careers of the more than 800 alumni. In turn, the contributions of our alumni along with our faculty and staff have made the State of Florida, the United States and the World a better place to live, particularly with respect to our food and fiber production system and the preservation of our environment and natural resources. I salute each one of you for your contributions which have become much too numerous to list.

However, I hope this Anniversary will provide an opportunity for each of us to reflect upon our good fortunes and past experiences as well as renew acquaintances and look to the future for even better things. Since the majority of my life has been spent in this department in some capacity beginning in 1958, I owe a great deal of thanks to literally hundreds of you for a most enjoyable and rewarding career. I would like to personally thank a few key people for the significant role they have played in my professional life: Professor Choate, my undergraduate advisor; Dr. Joe Ross and Professor Mostella Myers, my graduate advisors; and Dr. Drayton Kinard, my first Department Chairman.

I would also like to thank Dr. Allen Overman for his tremendous effort in chairing the 75th Anniversary Celebration, for the 75th Anniversary Committee for their contributions, and for each of the participants in this celebration.

*Direlle Baird*, Chairman  
Agricultural and Biological Engineering  
November 1998

## ANNIVERSARY PROGRAMS

General Program

Anniversary Ceremony

1923 - 1998

*75th ANNIVERSARY CELEBRATION*

AGRICULTURAL & BIOLOGICAL ENGINEERING DEPARTMENT

UNIVERSITY of FLORIDA

6 & 7 November 1998

5:00 – 10:00 pm	Friday, Nov. 6	Alumni Reunion Austin Cary Conference Center
9:00 – 11:30 am	Saturday, Nov 7	Anniversary Ceremony New Engineering Building, UF Campus
12:00 – 5:00 pm	Saturday, Nov 7	ABE Fallfest Lake Wauberg, South Complex

A gathering of  
alumni, friends, faculty, staff, students  
to commemorate the 75th anniversary of the  
Agricultural & Biological Engineering Department  
at the University of Florida

**75th Anniversary**

**Agricultural & Biological Engineering Department  
University of Florida / Institute of Food & Agricultural Sciences**

**Auditorium, New Engineering Building**

**7 November 1998**

**Master of Ceremonies – *Heather J. Pirozzoli*, Tyson Foods**

**9:00 Reception**

**9:30 Announcements & Introductions**  
Department Chairs  
1948 Department Faculty

**9:45 UF Administration – *Jack Ohanian*, Interim VP Research, Technology, Graduate Ed.**

**9:50 UF/IFAS Administration – *Michael Martin*, VP Agriculture & Natural Resources**

**9:55 ABE Advisory Board – *John Nix*, Florida Power & Light**

**10:00 Presentation of Scholarship Plaques – *Allen Overman*, ABE**  
Florida Section ASAE Scholarship – *Pat Kirby*, Florida Section ASAE  
Marlin Eller Memorial/MWI Scholarship – *David Eller*, MWI Inc.  
Dalton S. Harrison/Florida Irrigation Society Scholarship – *Dalton S. Harrison*, ABE  
Rush E. Choate Scholarship – *Rush E. Choate*, ABE  
John B. Boy/US Sugar Scholarship – *Frank Jones*, US Sugar Corp.

**10:10 Clientele – *Irby Exley*, Florida Business Community**

**10:15 Recollections of Student Days**  
*Joe Ross*, Alumnus & Former Faculty Member  
*Bill Dean*, Alumnus & Former Faculty Member  
*Kirk Brock*, AOM Alumnus

**10:30 ABE Past and Future – *Direlle Baird*, Chair**

**11:00 Discussion**

**11:30 Adjourn for Lunch at Lake Wauberg**

## INTRODUCTION

The University of Florida was established in Gainesville in 1906. Colleges of Agriculture and Engineering were a part of the university from the beginning. Courses in Agricultural Engineering were first taught in the Agronomy Department in 1909. Professor Frazier Rogers was hired in 1918 to teach courses in this subject.

The Agricultural Engineering Department was established at the University of Florida in Gainesville in 1923. Professor Rogers was appointed Head of the department. Florida then had a population of approximately 1 million people. Enrollment at UF was 1,350 students. By 1998, the 75th anniversary of the department, the Florida population had grown to 15 million and UF enrollment exceeded 42,000. In 1948 and 1973 UF enrollments were approximately 8,000 and 24,000, respectively. This means that in 1973 enrollment was about 50% of projected maximum.

By the 25th anniversary in 1948 the department had expanded to 6 faculty members. The role of the department now included teaching, extension, and research functions. At the time of the 50th anniversary the number had risen to 21. In 1998 there are 30 faculty in Gainesville and at research stations around the state. The present building was dedicated in 1955 and named Frazier Rogers Hall in 1959. Plans call for a complete renovation over the next two years.

During its 75-year history the department has graduated over 800 students in its various academic programs in agriculture and engineering. A BS in Agriculture with a major in AE was initiated in 1925. This was followed by a BS in Engineering with a major in AE in 1950 and a BS in Agriculture (Mechanized Agriculture) in 1958. A PhD in Agricultural Engineering through the College of Engineering was approved in 1982. The Agricultural Operations Management degree in the College of Agriculture, to replace Mechanized Agriculture, was approved in 1986.

Six scholarship funds have been established in Agricultural Engineering at UF. These include: Shipmann Scholarship in 1955 (in honor of John W. Shipmann of Florida Ford Tractor); Florida Section, American Society of Agricultural Engineers, in 1970; Marlin Eller Memorial/MWI Scholarship in 1975 (in honor of Marlin Eller, founder of MWI Inc.); Dalton S. Harrison/Florida Irrigation Society Scholarship in 1976 (in honor of Professor Dalton S. Harrison); Rush E. Choate Scholarship in 1988 (in honor of Professor Rush E. Choate); and John B. Boy/US Sugar Scholarship in 1989 (in honor of John B. Boy, President of US Sugar Corp.). Funds for these scholarships are derived from private sources. Nearly 200 scholarships have been awarded since 1970. Students also win scholarships from various other sources as well.

A number of changes in the department have occurred during the 1990s. In 1992 an external Advisory Board was appointed with 12 members from industry, consulting engineering, and public agencies. The Board meets on a semiannual frequency, and provides input on recruiting, employment, and other professional matters. In 1994 the name of the department was changed from "Agricultural Engineering" to "Agricultural & Biological Engineering" to accommodate expanding opportunities in our field. During 1998 a BS/MS combined undergraduate/graduate program has been approved to streamline academic training for students with high scholarship record.

Faculty in the department have been active in the formation (1953) and operation of the Florida Section of the American Society of Agricultural Engineers.

### MAJOR EVENTS RELATED TO AGRICULTURAL ENGINEERING

<u>Decade</u>	<u>Events</u>
1900–1910	University of Florida established at Gainesville in 1906 Colleges of Agriculture and Engineering part of UF
1910–1920	Agricultural Engineering courses offered in Agronomy Frazier Rogers hired in 1918 to teach agricultural engineering
1920–1930	UF enrollment 1350 in 1923 Agricultural Engineering Department formed in 1923 BS in Agriculture with major in AE initiated in 1925 Agricultural Engineering housed in Floyd Hall Farm Shop (temporary wooden building) assigned in 1929 Hoyle Pounds (Winter Garden, Florida) mounts rubber tires on Fordson tractor
1930–1940	USDA Soil Conservation Service formed in 1935 Soil and water conservation programs expanded
1940–1950	Frazier Rogers assigned to teach physics to military personnel WW II veterans arrive–UF enrollment jumps to 8,000 in 1948 Faculty expansion–in 1948 (50 years ago) faculty consisted of: Frazier Rogers, Rush Choate, Jack Johnson, Mostella Myers, Ray Pettis, and Tom Skinner. Combined teaching, research, extension assigned in 1947 Mechanization of hay and tobacco added USDA faculty added to research stations Flood control programs expanded in Florida

- 1950–1960
- Tractors surpass mules as farm power in Florida
  - AE department produces first TV show on tractors
  - Irrigated acreage expanded rapidly
  - Machinery research in citrus expanded
  - BS in Engineering with major in AE approved in 1950
  - BS in Agriculture (Mechanized Agriculture) approved in 1958
  - New building dedicated in October, 1955
  - Shipmann Scholarships established 1955 (lasted until 1962)
  - New building named Frazier Rogers Hall in 1959
  - Space age arrived in 1957—emphasis on science, engineering, technology
  - USDA faculty added to department
- 1960–1970
- BS in Engineering accredited by ECPD in 1962
  - Institute of Food & Agricultural Sciences (IFAS) formed 1965
  - Machinery research in vegetables expanded
  - Rise of environmental movement—federal and state environmental agencies formed
  - Research on agricultural and municipal waste treatment initiated
  - Tomato harvester introduced to Florida in 1968
- 1970–1980
- UF enrollment about 24,000 in 1973
  - Federal Clean Water Act passed in 1972; amended in 1977
  - Five Water Management Districts authorized by legislature
  - Florida Section ASAE Scholarship in Agricultural Engineering established at UF in 1970
  - Dalton S. Harrison/Florida Irrigation Society Scholarship in Agricultural Engineering established at UF in 1976
  - Marlin Eller/M & W Pump Works Scholarship in Agricultural Engineering established at UF in 1975
  - Energy programs expanded
  - Animal housing and environment greater importance in Florida
- 1980–1990
- PhD degree in Agricultural Engineering approved in 1982
  - Agricultural Operations Management program approved 1986
  - Rush E. Choate Scholarship in Agricultural Engineering established at UF in 1988
  - John B. Boy/U. S. Sugar Scholarship in Agricultural Engineering established at UF in 1989
  - Integration of computers into research and applications
  - Agricultural safety programs expanded

1990-2000	<p>Department Advisory Board appointed in 1992 Department name changed from "Agricultural Engineering" to "Agricultural &amp; Biological Engineering" in 1994 Engineering degree program reaccredited by ABET in 1994 Comprehensive review of department in March, 1998 BS/MS 3/2 combined undergraduate/graduate program approved 1998 Renovation of Rogers Hall approved by Board of Regents in Sept. 1998 Department celebrates 75th anniversary in November, 1998 UF enrollment tops 42,000 in 1998</p>
Future	<p>Strong identity with agriculture and engineering to continue; increased identity with biological sciences Information science and technology increasing role--information management and mathematical modeling Rapid population growth in Florida to continue--increased competition for land, water, and energy among agricultural, urban, recreational, and public land sectors Strong international competition in agricultural production and markets Good opportunities for graduates of engineering and agricultural programs Increased focus on graduate programs</p>



CONTRIBUTION OF THE AGRICULTURAL ENGINEERING BUILDING TO  
FLORIDA AGRICULTURE

Rush E. Choate, Assistant Professor  
Department of Agricultural Engineering  
University of Florida

A Statement Delivered at the Ground Breaking Ceremonies for the Agricultural Engineering Building, University of Florida, June 15, 1954

Today is a red letter day for Agricultural Engineering in Florida. It marks the beginning of construction of the building which will serve as a fountain of knowledge from which the results of Teaching, Research and Extension will flow to all corners of Florida.

The contribution to Florida agriculture from the building to be constructed on this site can be presented by stating the scope and effect of the work which is to take place in these facilities. This can be stated very clearly by defining the term "Agricultural Engineering." Suppose we take each of the two words separately:

**Agriculture:** agriculture, broadly speaking, is the science and art of the production of plants and animals useful to man, including to a variable extent the preparation of these products for man's use.

**Engineering:** Engineering is the practical application of science and scientific methods to industry. It is the science of controlling and utilizing the forces and materials of nature for the benefit of man.

Therefore, Agricultural Engineering is the practical application of science and scientific methods to the industry of agriculture.

The over-all production and management in each of the many specialized fields of the industry of agriculture in the state of Florida have engineering phases. This is true in livestock production, dairying, forestry, citrus production, field crops, truck farming cereal production fiber production, and rough processing. The engineering phases are:

1. Labor and materials for well planned buildings and new machines adapted to the job as to reduce labor cost, increase production per man, and reduce crop damage.
2. Application and use of energy for power, crop drying, crop processing and refrigeration.
3. Control of forces and materials of nature, such as soil, water, wind, solar energy, etc.
4. The economic application of the three previous factors, which is simply the art or skill of doing with one dollar what most anyone can do with two.

This building will provide facilities adequate for the first time in the history of our State and University for the concentrated effort of applying engineering phases to agriculture.

In keeping with the organization of the Land Grant College, this building will provide for the three divisions at the department level, space for the agricultural engineering extension worker to conduct demonstrations, work shops, and short courses for adults; the research agricultural engineers will be provided space and facilities to conduct basic, applied, and developmental research to accumulate a much needed supply of agricultural engineering information for the agricultural interest of this state; it will provide facilities and equipment for presenting a sound program of resident instruction on both the graduate and undergraduate levels. Thus, young men and women will soon leave this site well trained for service in agricultural production, in the equipment industry, in the industry allied with the agriculture of Florida, in teaching and in research. They will be trained to be leaders in the fields of farm buildings, farm machinery, farm electrification, water management, and crop processing.

In conclusion, on the premise that all agricultural production and management involve certain engineering phases, all aspects of Florida agriculture will benefit, in due time, directly or indirectly, by the classrooms, workshops, and laboratories about to be constructed on this site.

## DEDICATION OF THE AGRICULTURAL ENGINEERING BUILDING

Willard Fifield, Provost of Agriculture

October 15, 1955

The passage of the Morrill Act by Congress in 1862 provided for the establishment of colleges where agriculture, mechanic arts, and military science might be taught. The organization of these colleges in the various states followed much the same pattern. The first two departments to come into existence were agronomy, representing the plant sciences, and animal husbandry (called zootechny in the early University of Florida catalogs), representing animal science. Horticulture, if not established along with agronomy and animal husbandry, soon followed. Various other departments were added as the demand arose.

The University of Florida followed this national pattern, and in 1923 the Department of Agricultural Engineering became the fourth separate department in the College of Agriculture. The Agronomy Department offered courses under the title of Agricultural Engineering as early as 1909. The College was housed in one of the dormitories, Thomas Hall, prior to 1912. In the catalog of the University for the school year 1909-1910 is found a very familiar sentence, and I quote, "A strong hope is entertained that the Legislature of 1911 will appropriate money for an agricultural building and equipment that will adequately provide for all agricultural work at the University," end of quote. This hope was realized, and Floyd Hall was built as a result of the appropriation made by the 1911 Legislature.

Room 108 of this building was designated as the laboratory area of Agricultural Engineering and probably was quite adequate for that time. What a change time has brought! Imagine the Dean's office adjoining the farm motors laboratory and him being agreeable to it! The present Head of the Department, Professor Rogers, took over the instruction in agricultural engineering in the fall of 1918. The farm tractor was just beginning to appear on the farms of Florida, and one of the first jobs at the University was to hold a tractor demonstration for those curious to see the iron horse perform. Six makes of tractors were represented in the demonstration which attracted a crowd of approximately 1,000 persons. After some two hours of demonstrating, only two of the machines were able to leave the field under their own power. This did not dampen the spirits of those who saw great possibilities in the new machine, and so the farm equipment laboratory was supplied with demonstration machines. Before the tractors were placed on the one-inch wooden floor of Floyd Hall, Professor Rogers, seeing what he thought a chance to get more laboratory space, called upon Dean Rolfs and explained the hazards of placing farm tractors in Floyd 108, to which the Dean replied that that was what it was built for, so into Floyd 108 went the farm tractor. To put this machine in the hands of a college student in the room next to

the Dean's office—you can imagine what difficulty the Professor had keeping the noise down, especially when he wanted more laboratory space and this tractor was such an effective argument for it! The Dean happened to have some ideas of his own. World War I had just come to a close, and a temporary garage—and I do mean temporary—had been left on the campus. The Department was moved into this structure, only to vacate it on August 11, 1955.

The Department of Agricultural Engineering was established as such in 1923. It, like the three other departments of the College, was staffed with only one man. This might make for harmony in the staff, but its operations were very limited. Professor Rogers immediately recognized the need for an expanded Agricultural Engineering program to serve agriculture because he was aware of the engineering problems with which rural people must cope, and further realized that agriculture was destined to have great economic significance in the growth of our state. It was the continued application of such ideals and foresight that has lead the departmental activity from its early beginning to the present, at which time we see the department located in this excellent workshop which we are dedicating today and staffed by well qualified professional members.

This growth and progress has not been rapid or easily attained. The department was manned by one person until 1945, at which time money was obtained to employ one additional instructor and one extension Agricultural Engineer. Consequently during his early years in the department, by necessity most of Professor Rogers' professional abilities were devoted toward teaching. Much of the teaching program has been conducted in completely inadequate laboratories with makeshift and improvised equipment. It was 1947 before an organized research program was established.

By 1950 the staff comprised seven persons, all housed in Room 106 of Floyd Hall. Two stenographers, two extension engineers, one research engineer, and two teaching staff members and the Head of the department—all in the same room at the same time makes quite a crowd. The department was given quarters in Temporary Dormitory "H" five years ago and from there, on August 11, 1955, moved to the building we are now dedicating. Two positions are currently vacant and will be filled as soon as qualified personnel are obtained.

With this professional staff and this new faculty, an excellent Agricultural Engineering program is now presented to serve the needs of the State. In keeping with the organization of the land grant colleges, facilities are provided at the departmental level for agricultural engineers in each of the three divisions: extension, research, and teaching, to perform their respective duties in the five branches of agricultural engineering, namely: farm power and machinery, farm structures, farm electrification, soil and water management, and crop processing. There is space for the agricultural extension engineer to conduct basic, applied, and development research to accumulate a much needed backlog of agricultural engineering information to meet the demands of agricultural interest in our state; the basic facilities and equipment are provided for presenting a sound program of resident instruction on both the undergraduate and graduate level. Two curricula

are currently offered, one leading to a Bachelor of Science in Agriculture with a major in Agricultural Engineering, which is taken in the College of Agriculture; the other leads to a Bachelor of Agricultural Engineering, which is the professional Agricultural Engineering degree, is taken through the College of Engineering. This curriculum was initiated at the University of Florida in 1950, to supply young people well trained in the basic engineering sciences and suited to the needs of the State's expanding agricultural mechanization, and in industry allied with agriculture. During the five years since its initiation, this phase of the teaching program has been soundly established and has rapidly grown in popularity with students. However, as we plan the future, this area of instruction must be strengthened. The first step in this respect must be to conduct course work especially for the professional agricultural engineering students. This step is necessitated by the differences in purpose of the two curricula and by differences in academic background of the two groups; different levels of instruction must be presented to gear the educational process to a healthy tempo. The fact that this problem has not been rectified previously hinges on insufficient teaching budget. We shall continue our efforts to obtain the correct solution to this and other such problems.

As we review our over-all activities in Agricultural Engineering at this particular stage and with the idea of fitting these activities in proper perspective with the present and future agricultural program of the University, we find that it touches upon all phases of agricultural activities. We merely have to look at the upward population trend in Florida and the U. S. to realize that means must be provided to produce more food with less man-hours of labor if we are to continue to increase our standard of living. The agricultural engineer is destined to play an important role in meeting this challenge. He must continue to find ways to free agricultural laborers so they may take jobs in industry and produce both the manufactured products which we have accepted as necessities for our rapidly expanding population and the so-called luxuries by which we measure our standard of living.

There are numerous broad categories in which the agricultural engineer must apply his professional knowledge and abilities to meet the challenge of the future.

Water Management: Water control is already considered a necessity for stabilization of production by many farmers. This trend is increasing rapidly. Certainly the agricultural engineer must continue his efforts to provide means of irrigating crops more efficiently and effectively. He must work closely with colleagues in other departments to supply much needed information about soil, plant, and moisture relationships.

Fertilizer Application: The agricultural engineer must provide the machinery that will place plant nutrients in the soil at a position to be most available to the plant.

Plant Disease and Insect Control: Through research, machines well adapted for the application of sprays and dusts to our vast variety of crops must be provided.

We must find methods, processes, and machines which will remove many hand operations which are currently practiced in the production, processing, and marketing such crops as citrus and vegetables.

Also efforts to adapt machines more effectively to the production and harvesting field and forage crops on our vast variety of soils. Methods of establishing and renovating pasture for livestock must be improved.

Studies of relatively low cost farmstead buildings which are durable and well adapted to our climatic conditions should be undertaken, and investigations to establish economic and efficient utilization of electric power on the farmstead.

**Environmental Control:** Research to determine the economic effect of controlling light, temperature, and humidity for livestock and poultry. It is apparent that there are many problems connected with Florida agriculture which are a challenge to agricultural engineers. In retrospect, I am told by Professor Rogers that the first tractor purchased by the University had a useful life of 60 hours. That is, after 60 hours in the field, the open drive spur gears were so worn by the grinding effect of our sandy soil that it could no longer pull itself and was pulled back to the shed by a team of mules. Of course, needless to say, our tractor and machines today have been more adequately adapted. However, many of our current day practices, processes, and ideas may look equally as archaic 35 years hence.

We must apply our scientific and professional knowledge diligently and continuously to minimize that probability.

As we in Agricultural Engineering cross the significant milestone signified here today, it is proper that we take inventory of our program. In so doing, it very clearly comes to my mind that we must not only dedicate ourselves to the solution of materialistic problems, but we must give a more concentrated effort to the training of young agricultural engineers. This should be accomplished through:

1. Strengthening the training in such basic sciences as mathematics, physics, and chemistry.
2. Plan and carry out courses so as to stimulate creative thinking and imagination.
3. Include elective subjects to develop the special talents of the individual student and provide flexibility of opportunity for gifted students, so that each may better serve the varied needs of society.
4. A continuing effort to strengthen and integrate work in the humanities and social sciences into our agricultural engineering training program.
5. Insistence upon the development of a high level of performance in the oral, written, and graphical communication of ideas and instill the desire to uphold and maintain a high moral and ethical standing.
6. Strengthen our graduate program to meet the needs and to attract students of superior ability.



By adhering to these basic recommendation, we shall train and supply well qualified young people who will constitute the basic intellectual knowledge for the solution of the problems of tomorrow. So it is that we dedicate a building here this morning which is more than classrooms and laboratories. It represents a spirit and attitude filled with desire to train young people to serve with dignity in a dynamic society. This wholesome atmosphere, comprised of so many intangible factors is a direct attribute to years of splendid work and leadership by Professor Rogers. His services have not been limited to the Department of Agricultural Engineering and the College of Agriculture alone, but to the University as a whole. Especially is this true in the field of intercollegiate athletics where he has served on the Faculty Committee continuously since 1922.

With the consummation of this goal for which he has planned and labored long and diligently, we know that this workshop provides the means and the stimulus through which many answers to engineering problems in agriculture will be forthcoming from Professor Rogers and his staff.

---

These remarks were prepared by Rush E. Choate at the request of the Provost.

## DEDICATION OF NEW AGRICULTURAL ENGINEERING BUILDING

Remarks by Frazier Rogers  
15 October 1955

Dr. Reitz,  
Distinguished Guests,  
Ladies and Gentlemen:

Today brings the culmination of years of dreaming and hoping on the part of those of us in Agricultural Engineering at the University of Florida and throughout the State. It has not come without hard work on the part of many who are not directly connected with the Department and as spokesman for Agricultural Engineering, I wish to take this means of expressing our appreciation for your efforts and confidence in us by playing such an important part in providing this wonderful workshop.

It is my desire and prayer that we shall live up to your expectations in using this facility for the advancement of Agriculture in our grand state of Florida. To mention all groups and individuals who took part in bringing this dream to a reality would require too much time, but not to mention a few who have been at the forefront would be ingratitude on my part.

To our late Governor Dan McCarty, who through his understanding of the problems of agriculture, realized the potential service that could be rendered the state by Agricultural Engineering, if the proper facilities were provided for its use.

To the members of the Legislature of 1953 for appropriating the funds, which are so necessary for an undertaking such as this.

To the State Board of Education who so wholeheartedly approved the project.

To the State Board of Control, whose supervision and planning was so thorough and necessary.

To the late, beloved Dr. J. Hillis Miller, who as President of the University, gave so unstintingly of his time and energy to aid this cause.

To Dr. J. Wayne Reitz, who as Provost for Agriculture would not take "No" for an answer, and left no stones unturned to see that this structure was provided as a means of improving agriculture and thereby make a greater Florida.

To Provost Fifield, as the then Director of the Agricultural Experiment Station, for never missing an opportunity by word or deed to aid.

To all other of our colleagues, on and off campus, who did so much to assist.

To the Agricultural Council who so ably pleaded our cause before the various groups which was so vital to success.

To Mr. Jefferson Hamilton for his valuable contribution in planning and locating the building.



To the architectural firm Reynolds, Smith and Hills, in collaboration with Mr. Guy Fulton, architect of the Board of Control, and his associates, for their excellent job of building design.

To the construction firm of Arthur Perry, for their efforts to give us the very best structure possible for the funds provided. They tried in every way to give us a building of which we could be proud.

To all of you who we were not able to call by name due to limited time, that have contributed so much to the success of this undertaking, as well as those enumerated, please accept our profound thanks, and may we, by our future contributions to Agriculture, make you proud of having a part in this enterprise.

Thanks again.

MEMORANDUM OF UNDERSTANDING BETWEEN  
THE COLLEGE OF AGRICULTURE AND THE COLLEGE OF ENGINEERING  
CONCERNING WORK IN AGRICULTURAL ENGINEERING

It is agreed that a curriculum leading to the professional degree of Bachelor of Agricultural Engineering will be offered cooperatively by the College of Agriculture and the College of Engineering. Students will register in the College of Engineering and will receive their degrees from that college. It is agreed, further, that the College of Agriculture will continue to offer the non-professional plan of study leading to the degree of Bachelor of Science in Agriculture with a major in Agricultural Engineering.

It is agreed, further, that statements concerning the professional degree of Bachelor of Engineering of Agricultural Engineering should appear in the University Catalog as follows:

College of Agriculture

The Colleges of Agriculture and Engineering offer a cooperative plan of study leading to the degree of Bachelor of Agricultural Engineering. Students wishing to take this curriculum will register in the College of Engineering. See page \_\_ .

College of Engineering

The Colleges of Engineering and Agriculture offer the following cooperative plan of study leading to the degree of Bachelor of Agricultural Engineering. Students wishing to take this curriculum should follow the University College recommendations on page \_\_ for Engineering.

It is agreed, further, that:

1. A joint committee of four members, two from each of the respective colleges, will be appointed by the Deans to consider problems pertaining to Agricultural Engineering.
2. The committee member representing the Department of Agricultural Engineering, appointed by the Dean of the College of Agriculture, will be invited to attend all staff meetings called by the College of Engineering and shall enjoy the same voting privileges as members of the staff of the College of Engineering.
3. The Department of Agricultural Engineering will remain in the College of Agriculture and will maintain a non-professional curriculum in that college. The name of this curriculum is the most suitable that can be used at present. If and when a more suitable name is found that is mutually acceptable to the staffs of the two colleges concerned, the change will be made.

4. Due to the difference in the purpose of the professional and the non-professional curricula in Agricultural Engineering, mixed classes are undesirable. Therefore, some increase in staff will be necessary in the College of Agriculture to handle the necessary additional sections. This has been provided for in budget requests for 1951-52.

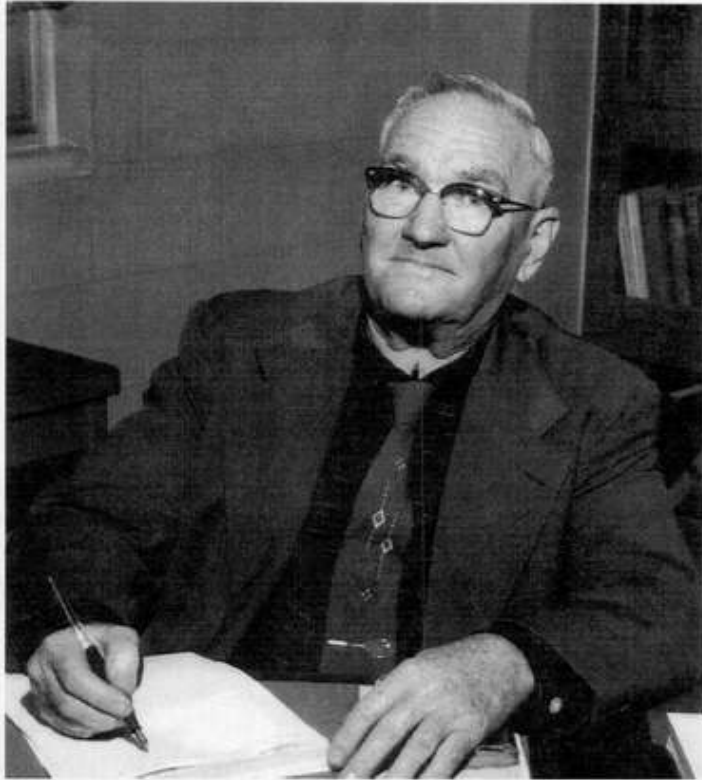
July 28, 1950

Approved

/s/ Joseph Weil  
Joseph Weil, Dean  
College of Engineering

/s/ J. Wayne Reitz  
J. Wayne Reitz  
Provost for Agriculture

/s/ C. V. Noble  
C. V. Noble, Dean  
College of Agriculture



**Frazier Rogers**

Professor	1918-1958
Head	1923-1958



Tom Skinner                      Frazier Rogers      Jack Johnson      Ray Pettis                      Dorthea Musk  
Rush Choate                      Mostella Myers

Agricultural Engineering faculty and staff located in Floyd Hall - 1948.



Frazier Rogers                      Rush Choate  
Planning new Agricultural Engineering building.



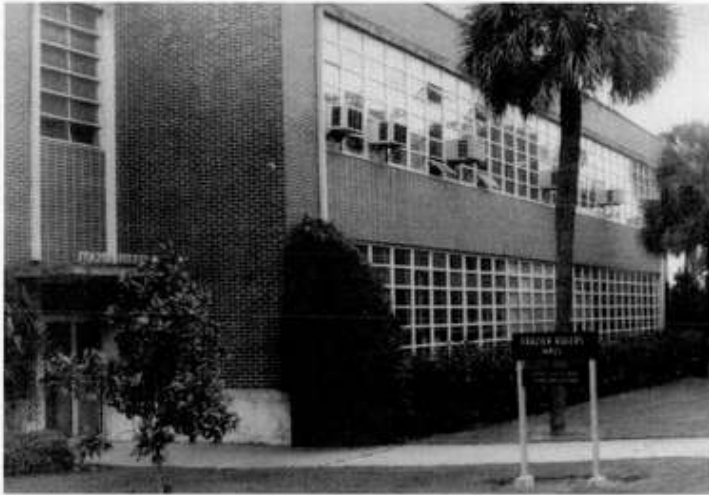
C.J. Skinner Frazier Monday Myers Unknown  
Rogers Rogers Johnson Norton Choate  
Musk Pettis

Groundbreaking for new Agricultural Engineering building - 1953.  
(Faculty and staff)

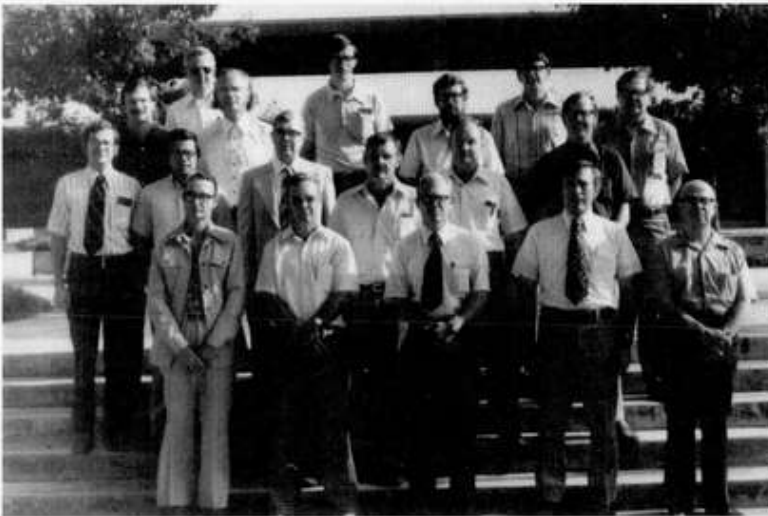


New Agricultural Engineering building - 1955.





Frazier Rogers Hall - 1970's.



Agricultural Engineering faculty - 1978.





Hoyle Pounds 1895 - 1986  
In 1926 Hoyle Pounds of Winter Garden,  
Florida, place rubber truck tires on a  
Fordson tractor.



Hoyle Pound's rubber tired tractor - 1926.



Farm Tractor Maintenance Short Course - 1946.

## AGRICULTURAL & BIOLOGICAL ENGINEERING LISTS

Department Chairs

Faculty

Staff

Alumni

## AGRICULTURAL ENGINEERING DEPARTMENT CHAIRS

<u>Period</u>	<u>Chair</u>
1923-1958	Frazier Rogers
1958-1958	Rush E. Choate (acting)
1958-1968	Drayton T. Kinard
1968-1973	Ernest T. Smerdon
1973-1975	Rush E. Choate (acting)
1975-1980	Gerald Zachariah
1980-1981	Rush E. Choate (acting)
1981-1991	Gerald W. Isaacs
1991-1992	C. Direlle Baird (acting)
1992-1996	Otto J. Loewer
1996-1997	C. Direlle Baird (acting)
1997-	C. Direlle Baird

FACULTY  
 AGRICULTURAL AND BIOLOGICAL ENGINEERING DEPARTMENT  
 UNIVERSITY OF FLORIDA  
 1923-1998

NAME	YEARS EMPLOYED
Adams, Donald E.	1950-1951
Arnette, James	1949-1950
Bagnall, Larry O.	1969-present
Baird, C. Direlle	1967-present
Baldwin, Lloyd B. "Barry"	1967-1987
Beck, Howard W.	1990-present
Becker, William J. "Bill"	1982-1994
Beeman, James F.	1962-1967
Berger, Kenneth R.	1998-present
Blair, James G. (Dept of Citrus, Citrus REC)	1961-1978 (deceased)
Boman, Brian J. (Indian River REC)	1985-present
Bottcher, Adelbert B. "Del"	1978-1993
Bowman, Earl K. (USDA)	1957-1982
Bucklin, Ray A.	1982-present
Buffington, Dennis E.	1971-1985
Byrom, Mills (USDA, Everglades REC)	1947-1965
Campbell, Kenneth L.	1972-present
Capece, John C. (Southwest Fla REC)	1994-present
Casselman, Theron W. (Everglades REC)	1960-1973
Chau, Khe Van	1975-present
Choate, Rush E.	1947-1986
Churchill, Donald B. (USDA, Everglades REC & Citrus REC)	1971-1987
Chynoweth, David P.	1985-present
Clark, Gary A. (Gulf Coast REC)	1988-1995
Clayton, B.S. (USDA, Everglades REC)	1933-1948
Clayton, Joe B. (USDA, Everglades REC)	1965-1985
Cocke, Joe E. (USDA, Everglades, REC)	1951-1955
Coppock, Glenn E. (Dept of Citrus, Citrus REC)	1958-1986
Cromwell, Richard P. "Dick"	1967-present
Curtis, Larry M.	1970-1971
Deason, Douglas L. (Citrus REC)	1969-1973
Deen, William W., Jr. "Billy" (Everglades REC)	1965-1973
Doughty, Robert	1954-1955
Dowling, St. Elmo	1957-1958

Earle, Jonathan F.	1987-present*
Eiland, Barney (USDA, Everglades REC)	1974-1988
Erisman, John Gary	1975-1980
Eshleman, Mr.	1923-1928
Evans, Sam F.	1963-1968
Fluck, Richard C.	1965-present
French, Byron T.	1982-present
Gaffney, Jerome J. (USDA)	1965-1991
Gentry, J.P. (USDA, Everglades REC)	1971-1972
Graham, Wendy D.	1988-present
Grizzell, William G. (USDA)	1959-1966
Haile, Daniel G. (USDA)	1973-1995
Haman, Dorota Z.	1985-present
Harrell, Roy	1983-1994
Harris, Kenneth A. (Everglades REC)	1949-1950
Harrison, Dalton S.**	1953-1984
Haugh, C. Gene	1964-1965
Hedden, Scott L. (USDA, Citrus REC)	1962-1987
Hedick, William C. (USDA, Everglades REC)	1972-1973
Hellwig, Robert E. (USDA, Everglades REC)	1954-1960
Henry, Fred E. (USDA)	1966-1986
Hill, David T.	1975-1979
Holmes, Elwyn S.	1956-1966
Hood, Fred	1988-1989
Hunnicuttt, Howard	1952-1954
Isaacs, Gerald W.	1981-1991
Izuno, Forrest T. (Everglades REC)	1984-present
Johnson, John M. "Jack"	1946-1953 (deceased)
Jones, James W.	1977-present
Jones, Pierce H.	1985-present*
Jutras, Pierre J. (Citrus REC)	1957-1964
Kahl, William H. (Citrus REC)	1956-1957
	1963-1964
Kinard, Drayton T.	1958-1974
Leary, James D.	1994-present
Lee, James F. (USDA)	1956-1957
Lehtola, Carol J.	1996-present
Lenker, Don H. (USDA, Citrus REC)	1963-1968

Lincoln, Edward P.	1975-present
Loewer, Otto J.	1992-1996
Marshall, Dale E. (USDA, Citrus REC)	1966-1969
Miller, William M. (Citrus, REC)	1975-present
Mills, William C. (USDA, Ft. Lauderdale REC)	1962-1966
Mishoe, J. Wayne**	1974-present
Myers, J. Mostella	1947-1982 (deceased)
Nordstedt, Roger A.	1969-present
Norton, John Stan	1951-1957
Oates, William J.	1945-1946
Overman, Allen R.	1969-present
Peart, Robert M.	1985-1998
Pettis, A.M. "Ray"	1947-1975
Pitts, Don (Southwest Fla REC)	1987-1991
	1992-1997
Porter, Wendell A.	1994-present
Price, Donald R.	1981-present*
Prosser, D.S. (Everglades, REC)	1953-1955
Randolph, John W. (Everglades, REC)	1947-1960
Raymond, James R. (USDA)	1956-1957
Richardson, Joe B.	1954-1966
Rogers, Clarence J.	1953-1979 (deceased)
Rogers, James Sam (USDA)	1968-1983
Rogers, Frazier	1918-1958 (deceased)
Ross, Ira Joseph	1959-1967
Salyani, Masoud (Citrus REC)	1985-present
Savage, Zach	1929-1929
Shackleford, Pat	1974-1976
Shaw, Lawrence N.	1969-present
Shih, Sun-Fu "Tony"	1976-present
Shoup, W. David	1980-1991*
Shuman, Dennis (USDA)	1990-present
Sinclair, Larry R. (Sanford ARC)	1973-1977
Skinner, Thomas C.	1947-1979 (deceased)
Smajstrla, Allen G.	1977-present
Smerage, Glen H.	1976-present
Smerdon, Ernest T.	1968-1975*
Speir, William H. (USDA, Ft. Lauderdale REC)	1962-1966
Stanley, James M. (USDA)	1971-1982

Stevens, J.C. (USDA, Everglades REC)	1948-1962
Strong (Professor)	1923-1923
Sumner, Harold R. (USDA, Citrus REC)	1968-1980
Talbot, Michael T.	1980-present
Teixeira, Arthur A.	1982-present
Turner, William K. "Ken" (USDA)	1969-1976
Turnbull, James (USDA, Citrus REC)	1946-1949
Walton, T.C. (USDA, Everglades REC)	1948-1949
Watson, Dennis G.	1987-1995
Weaver, H.A. (USDA, Everglades REC)	1958-1960
Webb, J.C. (USDA)	1970-1990
Whitney, Jodie D. (Citrus REC)	1965-present
Whittemore, Hiram D. (USDA Everglades REC)	1949-1971
Woodruff (Mr.)	1928-1928
Yost, G.E. (USDA)	1957-1965
Zachariah, Gerald L.	1975-1991* (deceased)
Zazueta, Fedro S.	1982-present*

\*Includes time serving in administrative positions outside department, but during which faculty status in department was maintained.

\*\*Includes time serving in faculty positions at Everglades REC before transferring to Gainesville.



AGRICULTURAL & BIOLOGICAL ENGINEERING  
STAFF LISTING  
1946-1998

NAME	TITLE	DATES
Abruzzo, Sonia	Sr. Secretary	1992-1998
Allen, Arthur "Bud"	Eng Tech IV	1985-1986
Alta, Rosie	Secretary	1968-1975
Ammerman, David	Eng Tech IV	1985-1985
Anderson, Angela	Secretary II	1981-1982
Andrews, JoAnn	Clerk Typist Specialist	1982-1986
Anglely, Elizabeth "Beth"	Eng Tech IV	1985-1987
Ash, Alan	Comp Sytems Analyst II	1980-1980
Auffenberg, Walter	Lab Tech II	1974-1976
Ayers, Bert	Eng Tech IV	1979-1979
Bailer, Herman	Eng Tech IV	1976-1978
Bailer, Michelle	Secretary IV	1974-1976
Beasley, Nancy	Clery Typist Specialist	1986-1994
Bell, Marilyn	Secretary Specialist	1985-1987
Beran, Robert	Eng Tech IV	1980-1986
Bibby, Cecilia "Ces"	Administrative Secretary	1988-1992
Booker, Eloise	Clerk Typist Specialist	1986-1986
Bowen, Judy	Secretary IV	1971-1976
Branch, Patty	Secretary II	1975-1975
Bryant, Barbara	Secretary II	1980-1980
Burch, Danny	Sr Engineer Technician	1983-present
Burch, Lester	Lab Mech Machinist II	1974-1982
Campbell, Reg. A.	Technical Support	1957-1967
Campbell, Veronica	Chemist	1980-present
Campbell, William	Lab Technician	1973-1980
Carroll, Marvin "Shorty"	Technical Support	1956-1963
Chambers, Rodney	Ag Technician I	1980-1981
Chang, Vandy	Comp System Analysis II	1983-1986
Chu, Ro-Lan	Lab Technician I	1974-1977
Clark, Joseph	Engineer I	1989-1991
Cormeiu, Nicki	Clerk III	1983-1983
Coyer, Art	Sr. Lab Machinist	1986-1992
Crews, M.O.	Machine Shop Supervisor	1983-1994
Curry, Susan	System Program Analysis	1984-1992
	Comp	1997-present
Davidson, Scott	Chemist II	1988-1989
Dubberly, Carole	Clerk Typist Specialist	1986-1986
Duckworth, Billy	Engineer Technician	1986-present

NAME	TITLE	DATES
Duff, Terrie	Secretary	1968-1968
Eissinger, Stephen	Computer Prog/Analysis	1988-1993
Elfino, Mohamed	Engineer I	1981-1985
Elholm, Jane	Office Assistant	1976-present
Eshleman, Bill	System Programmer II	1988-1993
Feagle, Steve	Instrument Maker	1993-present
Fishwick, Martha	Comp Prog Analysis II	1986-1987
Flaig, Eric	Lab Technician II	1980-1981
Flint, Dianne	Lab Technician II	1976-1980
Fogle, Andrea	Secretary Specialist	1988-1988
Gates, Brian	Eng Technician IV	1988-1990
Goins, B.J.	Secretary Specialist	1988-1990
Graham, Glenna	Secretary	1965-
Gray, Karen	Secretary II	1978-1979
Hahn, Annie	Secretary	1971-
Hales, Jim	Eng Technician IV	1969-1981
Hall, Mary	Secretary III	1982-1984
	Program Assistant	1991-present
Hall, Tom	Secretary II	1979-1979
Halsey, Donna	Secretary Specialist	1987-1987
Hansen, Nora	Secretary III	1974-1976
Hansen, Richard	Eng Technician IV	1980-1981
Hardee, Harold	Eng Technician IV	1983-1984
Harper, Mike	Comp Prog/Anayslis	1994-1995
Harrell, Anna	Secretary	1975-1983
Harris, Mary	Office Assistant	1983-present
Herrin, Harriet	Secretary	1962-1967
Hershman, Cindy	Secretary II	1979-1981
Hoffman, (Fugate) Marie	Sr. Secretary	1985-present
Hoffman, Ralph	Crd. Research Programs	1980-present
House, Gregory	Comp Systems Anslsysis II	1984-1985
Hudson, John	Eng Technician II	1971-1983
Hunt, Delia	Secretary	1977-1979
Hunter, Louis	Eng Technician II	1979-1981
Hunter, Wally	Crd Computer Systems	1985-present
Hutchins, Kelly	Technical Support	1969-1973
Jamerson, Charlene "Charley"	Sr. Fiscal Assistant	1994-1997
Johns, Kelton	Engineer I	1979-1990
Kassel, Helen	Sci Programmer	1984-1985
Keene, Eddie	Sr. Engineer Technician	1983-present
Kelly, Katherine	Secretary II	1981-1983
Kerns, Jan	Secretary	1985-1998
Klockowski, Ruth Ann (Bailey)	Secretary	1975-1980

NAME	TITLE	DATES
Lamberson, Sandra	Sr. Secretary	1993-1993
Lancaster, William	Computer Programmer II	1974-1978
Lane, Paul	Engineer Technician	1979-present
Lange, William	Sci Programmer	1984-1984
Lanni, Orlando	Engineer	1980-present
Lietz, Marilyn	Clerk Typist Specialist	1981-1985
Lord, Mikell	Engineer I	1980-1982
Lovett, David	Elec Technician II	1971-1979
Lui, S.P.	Lab Technician I	1974-1975
McMahon, Brian	Lab Technician II	1976-1979
McNary, Norman	Elec Technician II	1979-1982
Madden, Janet	Secretary II	1978-1979
Mao, Mario	Engineer I	1983-1985
Marshall, Gil	Biological Scientist I	1987-1991
Massey, J. David	Eng Technician II	1980-1981
Melian, Melodie	Secretary II	1974-1975
Meeks, Cheryl	Secretary II	1981-1981
Mendoza, Dawn	Sr. Fiscal Assistant	1985-1986
	Administrative Assistant	1988-present
Miles, Barbara	Secretary II	1980-1980
Miller, Larry	Engineer	1979-present
Miller, Loren	Eng Technician	1986-1994
Monday, Thomas A.	Shop Supervisor	1949-1982
Monroe, Janice	Secretary II	1979-1980
Morgan, Diane	Secretary II	1976-1978
Musk, Dorothy	Secretary	1946-1964
Niblack, Helena	Sr. Computer Programmer	1987-present
Neff, Christina	Eng Technician IV	1987-1995
Nice, Leigh	Secretary Specialist	1984-1987
Nguy, Alfred	Eng Technician IV	1973-1977
Olson, Clay	Engineer Technician	1979-1981
Omniski, John	Lab Technician II	1976-1980
Osteen, B.J.	Engineer Technician	1986-present
Palmer, Drema (USDA)	Clerk Typist	1975-1977
Paramore, John	Engineer I	1985-1987
Pearson, Betty	Secretary	1970-present
Peterson, Norma	Secretary II	1975-1976
Phillips, James	Comp Systems Analysis II	1984-1985
Player, Bettye	Word Processor Operator	1985-1985
Reese, Raymond	Eng Technician III	1979-1980
Roark, Cynthia	Secretary II	1980-1980
Robinson, Shirley	Secretary II (USDA)	1980-1982
Roche, Karen	Staff Assistant II	1980-1987

NAME	TITLE	DATES
Rummel, Jimmy	Engineer Technician	1986 -present
Rust, Barbara	Accounting Clerk II	1978-1980
Sampley, Carollene	Secretary II	1975-1976
Scrivener, John	Engineer Technician	1988-present
Shaw, George	Eng Technician IV	1980-1982
Shea, Robert	Eng Technician I	1981-1982
Sheffield, Tom	Lab Technician	1976-1978
Sherman, Don	Lab Mech Machinst I	1969-1976
Shuttleworth, Robert	Lab Technician IV	1980-1981
Simpson, J. Mike	Eng Technician IV	1983-1985
Slean, Terry	Sr. Engineer Technician	1975-present
Smallwood-Wild, Susan	Biol Sci II	1986-1990
Smith, Carolyn	Secretary II	1980-1981
Stander, Barbara	Secretary IV	1979-1981
Stone, Jamie	Computer Programmer II	1980-1980
Stieh, Elaine	Secretary IV	1980-1984
Studstill, Susan	Staff Assistant	1989-1990
Stull, Shannon	Senior Secretary	1988-1993
Swaney, Dennis	Sci Programmer	1980-1984
Tabone, Chyrisse	Chemist II	1986-1988
Taylor, Art	Sr. Engineer Technician	1984-present
Teele, Calvin	Technical Support (USDA)	1966-
Theus, Letuia "Kippi"	Secretary II	1980-1981
Tisher, Jean	Secretary Specialist	1982-1992
Tonkinson, Bob	Engineer Technician	1984-present
Turan, Mike	Instrument Designer	1988-1990
Turick, Charles	Biological Scientist III	1986-1990
Ufford, Deborah	Clerk Typist II	1985-1986
Underwood, Patty	Clerk Typist III	1984-1985
Van de Mark, Joanne	Fiscal Assistant	1977-1979
Wagner, John	Sr. Lab Machinist	1974-1987
Waelder, Monika	Sci/Eng Programs	1985-1988
Watkins, Barbara	Secretary II	1983-1983
Weldon, Curtis	Engineer I	1987-1995
Weldon, Johnny	Engineer III	1965-1989
White, John	Sr. Computer Repair Tech	1996-present
Williams, Patricia	Fiscal Assistant I	1987-1988
Williams, Wayne	Sr. Engineer Technician	1988-present
Wilson, Jeanette	Fiscal Assistant	1988-1993
	Sr. Fiscal Assistant	1998-present
Windham, Jim	Lab Technician II	1967-1978
Wolf, Glen	Engineer I	1983-1983
Wolters, Karen	Secretary II	1979-1980

**AGRICULTURAL & BIOLOGICAL ENGINEERING  
ALUMNI LIST  
1935-1998**

Last Name	First Name	College	Bachelor	Bachelor Date	Masters	Masters Date	PhD	PhD Date
Abouhamze	Amer	AG	BSAg	1997				
Adams	Donald E.	AG	BSAg	1949				
Adams	Michael Gene	AG	BSAg	1986				
Address	Andrew	AG	BSAg	1996				
Adsit	Phillip Dean	EG					PhD	1989
Agdamag, Jr.	Peter L.	AG	BSAg	1994				
Agosta	Antonio	AG	BSAg	1995				
Aguayo	Arturo	EG	BSE	1996				
Aguirre	Roberto	EG			MS	1981		
Ahmadi	Behzad	EG	BSE	1981				
Ajlani	Husam Ihsan	EG	BSE	1987				
Akers	Warren R.	EG	BSE	1980				
Alberson	Mark Douglas	EG	BSE	1981				
Albright	Christopher A.	AG	BSAg	1981				
Alcazar	Jose Adrian	EG	BSE	1990				
Allbritton	Michael K.	AG	BSAg	1982				
Allhands	Marcus N.	EG					PhD	1989
Allick	Sherry Ann	EG	BSE	1993				
Almedo	Manuel Maria	EG	BSE	1986				
Alvarez	Ricardo Luis	AG	BSAg	1984				
Alvarez	Claudio F.	EG			ME	1990		
Ammerman	David K.	EG	BSE	1984	ME	1986		
Anderson	Eric	AG	BSAg	1993				
Anderson	Jerrel L.	EG			MS	1977		
Andrews	Aaron T.	AG	BSAg	1996				
Anson	Jim D.	AG	BSAg	1994				
Aribi	Kamarudzaman B.	AG	BSAg	1983	MSAg	1985		
Arifin	Buhri Bin	EG	BSE	1984	ME	1987		
Arrington	Bartley Ely	EG	BSE	1994				
Ashton	Bradley	AG	BSAg	1997				
Asmussen	Loris Carl	EG	BSE	1989				
Atchley	Robert	AG	BSAg	1998				
Avery	Mark William	EG	BSE	1993				
Azcuna	Alian Buenafe	AG	BSAg	1996				
Baalbaki	Mohammad H.	EG	BSE	1984				

Bailey	Nathaniel O.	EG	BSE	1979	ME	1984		
Bailey, Jr.	William W.	AG	BSAg	1984				
Baird	Carl Direlle	EG	BSE	1962	MS	1967		
Baker	Marlo	AG	BSAg	1997				
Baker	Leonard Eric	AG	BSAg	1983				
Balaratnam	Christie	EG			MS	1975		
Baldwin	Lloyd B. "Barry"	AG			MAg	1953		
Baragona	George T.	EG	BSE	1965				
Barber	Derek L.	AG	BSAg	1996				
Barcelo	Mark David	EG	BSE	1978				
Barcelona	Stephanie	AG	BSAg	1997				
Barnett, Jr.	John C.	EG			MS	1977		
Barthle	Mark Francis	AG	BSAg	1984				
Bartz	Brett Jerry	EG	BSE	1996				
Baruch	Leila J.	AG	BSAg	1993				
Batchelor	William David	EG					PhD	1993
Baterna	Patrick	AG	BSAg	1998				
Bauer	Michael Curtis	EG	BSE	1979				
Beasley	Kimberly Helen	AG	BSAg	1987				
Becca	Sharon G.	AG	BSAg	1992	MS	1995		
Beck	Douglas S.	AG	BSAg	1992				
Bell	Johnny L.	AG	BSAg	1996				
Bellagha	Sihem	EG			ME	1984		
Bellone	Rebecca R.	AG	BSAg	1996				
Berinyuy	Joseph Edwin	EG					PhD	1988
Bethune	Gary Porter	EG	BSE	1986				
Beville	Bishop C.	AG	BSAg	1950	MS	1951		
Bianco	Gregory	AG	BSAg	1993				
Bichier	Jacques G.	EG	BSE	1990	ME	1992		
Birjandi	Ali Reza	AG	BSAg	1993				
Birnbaum	Lewis P.	AG	BSAg	1996				
Black	Brian W.	AG	BSAg	1995				
Black	Darren	AG	BSAg	1997				
Blakeslee	Mark Capron	EG			MS	1984		
Block	Wayne A.	EG	BSE	1983	ME	1986		
Bloodsworth	Clifford E.	AG	BSAg	1960				
Bodiford	Jason	AG	BSAg	1996				
Bolte	John Patrick	EG			MS	1983		
Borer	Daniel Bernard	AG	BSAg	1977				
Boshell	Gregory A.	EG	BSE	1982				
Bottcher	Adelbert B. "Del"	EG			MS	1974		

Bowden	Jerry Paul	EG			MS	1975		
Boykin	William C.	AG			MSAg	1975		
Braddock	Jamers	AG	BSAg	1997				
Brannon	Patrick W.	EG	BSE	1981				
Brashear, II	Sampson	AG	BSAg	1968				
Brass	Henry E.	EG	BSE	1974				
Bravo	Carlos J.	EG	BSE	1972				
Bravo-Hernandez	Jose I.	AG	BSAg	1982				
Brealey	John Allan	EG	BSE	1993				
Brigham	James Davis	AG	BSAg	1980				
Brinson	Haynes E.	AG	BSAg	1994				
Britt	Gene A.	EG	BSE	1975				
Brock	Kirk	AG	BSAg	1989				
Brooks	Ronald C.	AG	BSAg	1995				
Brouwer	Petrus C.	EG	BSE	1982				
Brown	Max M.	??			MS	1966		
Brown	Gottfried J.	EG	BSE	1991				
Brown, Jr.	Ralph E.	EG	BSE	1986				
Browning	Thomas	AG	BSAg	1996				
Broxterman	Barbara L.	EG	BSE	1977				
Brubaker	Gregory F.	EG	BSE	1983				
Brunty	Jennifer Lee	AG	BSAg	1993	MS	1995		
Bryan	William Mark	AG	BSAg	1988				
Bryant	Steven McRoll	EG	BSE	1992	ME	1995		
Bryant	Craig Timothy	AG	BSAg	1988	MS	1990		
Buckhart (Koles)	Susan K.	EG			ME	1986		
Buckley	Hubert E.	AG	BSAg	1949	MAg	1950		
Bullock	Christopher B.	AG	BSAg	1996				
Burdick	Robert H.	AG	BSAg	1958				
Burgard (Skipper)	Daphne L.	AG	BSAg	1994				
Burgess	Raymond H.				MS	1961		
Burke	Patrick B.	EG	BSE	1976	ME	1980		
Burleson	Robert Wesley	EG	BSE	1984	ME	1988		
Burnett	Wesley Lee	EG	BSE	1977				
Burnham	Randy Lee	EG	BSE	1981				
Burns	Ivy L.	EG	BSE	1990				
Burtscher	Bradford J.	AG	BSAg	1996				
Bush	Melissa B.	EG	BSE	1985				
Butts	Christopher Lloyd	EG					PhD	1988
Byles	Clifton	AG	BSAg	1997				
Byrd, Jr.	William Albert	AG	BSAg	1985				



Caballeira	Jesus	AG	BSAg	1966				
Cain	Justin B.	AG	BSAg	1990				
Calixte	Jean-Paul	AG			MS	1992		
Callahan	Michael B.	EG	BSE	1993				
Callejas	Bernardo Noel	EG	BSE	1996				
Calvert	Victor N.	EG			ME	1989		
Campbell	Leslie A.	AG	BSAg	1993				
Campbell	Heather-Beth	AG	BSAg	1998				
Campbell	Dana C.	AG	BSAg	1996				
Campbell, Jr.	William J.	EG			MS	1979		
Canales	Antonio	AG	BSAg	1996				
Canton	Gilbert H.	EG	BSE	1976	MSE	1977		
Capece	John C.	EG	BSE	1982	MSE	1984	PHD	1994
Capezza	Louis	EG	BSE	1997				
Cardin	Brian Keith	AG	BSAg	1986	MS	1988		
Carlan	Kevin S.	AG	BSAg	1994				
Carlin	Robert James	AG	BSAg	1996				
Carlton	Mark Deweese	AG	BSAg	1981				
Carraway	Tyler	AG	BSAg	1996				
Carter	Hugo A.	EG	BSE	1979				
Casanova	Antonio Jose	AG	BSAg	1983				
Cawich	Jorge Felipe	AG	BSAg	1987				
Cera	Timothy B.	EG			ME	1990		
Chang	Lieh-Wen	EG			ME	1997		
Chau	Khe Van	EG	BSE	1963	MS	1964		
Cheng	Ke-Sheng	EG					PHD	1989
Choate	Rush E.	AG			MAG	1953		
Choate	Charles P.	EG	BSE	1957				
Chou	Chu-Yang	EG					PhD	1989
Christmas	Robert B.	EG	BSE	1985				
Chu	Ro-Lan Liu	EG			MS	1976		
Church, II	Glenn A.	EG			ME	1981		
Cifuentes	Jaime	??			MS	1971		
Cisneros	Gerardo E.	EG	BSE	1985				
Clark	Gary (Mitch)	AG	BSAg	1996				
Clark	Joseph W.	EG			ME	1994		
Clark	Gary A.	EG	BSE	1980	ME	1982		
Clark	Tico	AG	BSAg	1995				
Clay	David L.	EG	BSE	1976				
Claybrooke	J. Richard	EG	BSE	1991				
Clements	William Rodney	EG	BSE	1972				



Cobb	Wallace L.	AG	BSAg	1950				
Cobb	David G.	EG	BSE	1971				
Cobb	Leonard C.	AG	BSAg	1949				
Cochrane	Stephen Morgan	AG	BSAg	1988				
Cocke	Joseph Baird	AG	BSAg	1949				
Cofer	John A.	EG	BSE	1976				
Cohan	Mario Hugo	AG	BSAg	1986				
Coleman	Jeffrey F.	AG	BSAg	1994				
Collazo-Arocho	Agustin	EG	BSE	1974	ME	1976		
Collins (Bean)	Lisa Marie	EG	BSE	1991	ME	1994		
Collins, II	Joe Earl	EG	BSE	1991				
Condit	Steven	AG	BSAg	?				
Conerly	William	EG	BSE	1997				
Cook, Jr.	Thomas Wallace	EG	BSE	1970				
Cooper	Tracy L.	AG	BSAg	1994				
Cooper	Charles	AG	BSAg	1995				
Corns	Paul Jason	AG	BSAg	1993				
Corral	Francisco J.	EG	BSE	1973				
Correa	Alvaro J.	EG	BSE	1982				
Cossette	Steven A.	AG	BSAg	1980				
Costa	Maria Elena	??			MS	1991		
Coultas	Peter L.	EG	BSE	1983				
Cowart, Jr.	William H.	EG	BSE	1986				
Crawford	James J.	AG	BSAg	1988	MS	1993		
Crawford, IV	Lawrence L.	AG	BSAg	1982				
Cromwell	Richard P.	EG			ME	1967		
Cromwell (Lackey)	Barbara Jo	AG	BSAg	1996				
Croxton	Ernest A.	EG	BSE	1960				
Cuadra	Ricardo	AG	BSAg	1993				
Cunningham	Anthony Lee	EG	BSE	1995				
Curry (Donovan)	Susan	EG	BSE	1979				
Cutler	Adam	AG	BSAg	1996				
Cutler	Christopher	AG	BSAg	1996				
Cutshall, Jr.	Paul L.	AG	BSAg	1992				
Dailey (Butler)	Valerie J.	EG	BSE	1979	MS (Ag)	1990		
Daniel	Michael	AG	BSAg	1991				
Daphnis	Louis J.R.	AG	BSAg	1994				
Datta	Ashim K.	EG					PhD	1985
Davenport	John	EG	BSE	1997				
Davies	Jon	AG	BSAg	1998				
Davila-Cardenas	Rafael E.	EG			MS	1973		

Davis	Nadine A.	AG	BSAg	1992				
Davis	Scott Richard	EG	BSE	1995				
Davis, Jr.	Montrey V.	AG	BSAg	1983				
Daza	Marcelo	AG	BSAg	1984				
De Greef	Johan H.	EG	BSE	1985				
Dean	Karen	AG	BSAg	1995				
Debicki	Ireneusz Wieslaw	EG			ME	1990		
Deen, Jr.	William W.	EG	BSE	1963	MS	1965		
Delacruz	Richard B.	AG	BSAg	1994				
Demmy, Jr	George Gary	EG			ME	1993		
Dempsey	Ryan	EG	BSE	1997				
Deneen (Simpson)	Valerie M.	EG	BSE	1979				
Denmark	Christopher	AG	BSAg	1996				
Denton	Andrew L.	AG	BSAg	1992				
Desai	Dipak V.	EG			MSE	1977		
Devore	William E.	AG	BSAg	1967				
Diaz	Juan J.	EG	BSE	1985				
Dickson	David G.	EG	BSE	1960				
Dillman	Yvette L.	AG	BSAg	1994				
Dinkler	Hugh D.	AG			MS(Ag)	1990		
Dishong	John D.	EG	BSE	1956				
Dobbs	Steven L.	EG	BSE	1989				
Dolan	Kirk D.	EG	BSE	1983				
Dolande	Jordan J.	EG			ME	1985		
Donovan	Thomas	AG			MS	1993		
Dorisca, Jr.	Fritz J.	AG	BSAg	1992				
Dorsey	Cecilia	EG	BSE	1982				
Douglas	Maynard H.	EG	BSE	1974				
Dowling	St. Elmo	AG	BSAg	1949	MA	1950		
Downey	Daniel	EG	BSE	1988	ME	1992		
Downing, Jr.	Harry C.	EG	BSE	1978				
Drake	John R.	AG	BSAg	1986				
Drannbauer	Edward	AG	BSAg	1997				
Duke	William K.	EG	BSE	1979				
Dvorak, III	Robert E.	EG	BSE	1984				
Dycus, Jr.	Douglas Levi	EG	BSE	1987				
Dypolt	Douglas J.	EG	BSE	1970	MS	1972		
Dzegede	Anthony Y.M.	EG	BSE	1979				
Echeverria	Ricardo	AG	BSAg	1990				
Eddington	Donald L.	EG			ME	1985		
Edgemon, Jr.	Jackie B.	AG	BSAg	1995				

Edgerton	Richard G.	EG	BSE	1960				
Edwards	Steven David	AG	BSAg	1985				
Elferdink	Brian	AG	BSAg	1998				
Elfino	Mohamed K.	EG			ME	1980		
Elfino	Nariman E.	EG			MS	1980		
Eller	Dana J.	EG	BSE	1995				
Eller	J. David	EG	BSE	1964				
Ellerbrock (Stahl)	Susan M.	AG	BSAg	1983				
Elmore	James P.	AG	BSAg	1996				
Emery	Tyson R.	AG	BSAg	1992				
Emond	Jean-Pierre	EG					PHD	1992
Eng	Ralph E.	EG	BSE	1965				
Eng	Edward J.	EG	BSE	1980				
English	Jennifer L.	AG	BSAg	1996				
English	John C.	EG	BSE	1995				
Erdogan	Gul	EG			ME	1993		
Eshleman	William D.	EG			ME	1976		
Ettefagh	Ali Hemasian	AG	BSAg	1984				
Etters	Eric M.	EG	BSE	1984				
Evans	Laura Lee	AG	BSAg	1995				
Faeth	Paul E.	EG	BSE	1981				
Fairchild	Leslie S.	EG	BSE	1967	MS	1970		
Falconi	Javier E.	AG	BSAg	1992				
Farhad-Tooski	Khosrow	EG	BSE	1986				
Faulkner	Arthur G.	AG	BSAg	1977				
Faulkner	Toriano	AG	BSAg	1994				
Fawsett	Jeffrey C.	EG	BSE	1966	ME	1984		
Fenneman	Daniel Keith	AG	BSAg	1985				
Ferber	Brian T.	AG	BSAg	1992				
Ferguson	Brooks B.	AG	BSAg	1986				
Fernandez-Montes	Aben	EG			ME	1977		
Ferreira	David E.	EG	BSE	1976				
Fialho	Flavio	??					Phd	1997
Fink	Willard Logan	AG	BSAg	1974	MSAg	1975		
Flaig	Eric G.	EG					PhD	1990
Flipse	Gerald J.	AG	BSAg	1957				
Flood, Jr.	Clifford A.	EG	BSE	1962				
Ford	Arthur J.	EG	BSE	1972				
Fowler	Philip A.	EG			ME	1993		
Fowler, Jr.	William E.	EG	BSE	1972	MS	1973		
France	Ronald J.	AG	BSAg	1969				

Frank	Joseph A.	EG			MS	1975		
Freeman	George R.	AG			MSAg	1957		
Freeman	Michael W.	EG	BSE	1985				
Freire	Evandro S.	EG					PhD	1995
Gaitan	Camilo A.	EG	BSE	1985				
Gale	Thomas R.	AG	BSAg	1953				
Galindez	Angel Custodio	AG	BSAg	1983				
Garces	Guillermo A.	EG	BSE	1973				
Garcia	Raymond M.	EG	BSE	1992				
Garfield	Morton J.	AG	BSAg	1948				
Garner	Joseph C.	EG			ME	1986		
Garrett	Wiley C.	AG	BSAg	1949				
Garrick	Wesley E.	AG	BSAg	1951				
Garrison	Donald E.	AG	BSAg	1976				
Geiger	Russell Allen	AG	BSAg	1985	MS	1990		
Geihlsler	James	EG	BSE	1997				
Gentile	Joseph M.	EG	BSE	1960				
Gerber	Charles Bertram	EG	BSE	1970	MS	1972		
Gerhard	James N.	AG	BSAg	1990				
Gilpin-Hudson	David R.	AG	BSAg	1983	MS	1986		
Glisson	Jason L.	AG	BSAg	1996				
Glunz	Douglas J.	AG			MS	1985		
Golshayan	Bijan	??			MS	1963		
Good	John C.	EG			ME	1986		
Goodowns, Jr.	Charles M.	AG	BSAg	1992				
Gordon	Jennifer D.	AG	BSAg	1996				
Goswami	Sugata	EG			ME	1993		
Graham	Heath	AG	BSAg	1997				
Grant	Brian Ray	AG	BSAg	1978				
Green	Hiram, Jr.	AG			MAg	1952		
Green	Spencer P.	AG	BSAg	1992				
Greene	Kelley	AG	BSAg	1995				
Greseth	Kendra V.	AG	BSAg	1995				
Griggs	Jonathan	EG	BSE	1998				
Grisel (McQuaid)	Anna E.	EG	BSE	1985				
Grove	Rayn	EG	BSAg	1997				
Guerndt	Charles W.	AG	BSAg	1990				
Gunn, III	Robert S.	AG	BSAg	1990				
Gustashaw, Jr.	John C.	EG	BSE	1972	MS	1973		
Guyer	Stephanie Y.	AG	BSAg	1994				
Guzman	Jose L.	AG	BSAg	1991				

Hadden	John M.	EG	BSE	1970	MSE	1971		
Ham	Audie G.	AG	BSAg	1994				
Hamilton	Douglas	AG	BSAg	1995				
Hammond, III	Alfred L.	AG	BSAg	1983				
Hamzhe	Abbas	EG	BSE	1982				
Hansen	James W.	AG					PHD	1996
Harbour	Brent A.	AG	BSAg	1989				
Harlow	Stephen John	AG	BSAg	1986				
Harr	Darrin R.	AG	BSAg	1991				
Harper	Lowry A.	EG	BSE	1964				
Harrell	Aubrey L.	AG	BSAg	1949				
Harris	Kevin	AG	BSAg	1997				
Harris	Adam	AG	BSAg	1997				
Harrison	Catherine	EG			ME	1998		
Harrison	Tony V.	AG	BSAg	1984			PHD	1995
Harrison	Dalton S.	AG	BSAg	1950	MS	1953		
Hatala	Leonard J.	AG	BSAg	1985				
Hatter	Lester C.	AG	BSAg	1976				
Hayduk	Lawrence R.	EG	BSE	1973				
Hayes	Christopher	EG	BSE	1997				
Heath	Harold R.	EG	BSE	1958				
Heatwole	Conrad D.	EG					PhD	1986
Hedick, Jr.	William C.	EG	BSE	1969	MS	1970		
Hejna	Donald J.	EG	BSE	1967				
Henderson	Robert W.	EG	BSE	1970				
Henderson	James Todd	AG	BSAg	1991	MS	1993		
Hendry	Jack Russell	AG	BSAg	1983				
Herren	James Wesley	AG	BSAg	1993				
Hewett	Benjamin Jason	AG	BSAg	1988				
Hill	David Edward	AG	BSAg	1985				
Hill	Otis Neal	AG	BSAg	1983				
Hines	Corey D.	EG	BSE	1996				
Hinton	Robert M.	EG	BSE	1976				
Hoang	Vy Q. "David"	EG	BSE	1990				
Hodges	Alan W.	AG					PHD	1995
Hoepker	Erich V.	AG	BSAg	1980				
Hoffman	Mr. Wesley	EG			ME	1994		
Hogan	Jeffrey Dale	AG	BSAg	1988				
Hollis	Mark B.	AG	BSAg	1994				
Hollis	Marvin Glenn	AG	BSAg	1949				
Holloway	Michael Paul	EG	BSE	1989	ME	1991		

Holmberg	Gregory Jon	AG	BSAg	1992				
Holmes	William R.	EG	BSE	1961				
Holt, Jr.	William K.	AG	BSAg	1990				
Hood	Charles Fred	EG					PhD	1992
Hooker, III	Henry F.	AG	BSAg	1986				
Hoover	Barry	AG	BSAg	1997				
Horton	Robert A.	EG	BSE	1994				
Howard	Vincent B.	AG	BSAg	1996				
Hunnicutt	Laura	AG	BSAg	1997				
Hunt, Jr.	Samuel D.	EG	BSE	1959				
Hunter	Louis W.	AG	BSAg	1979				
Hunter, Jr.	Julius W.	EG	BSE	1981				
Hurley	Richard E.	AG	BSAg	1994				
Hurst	Kevin Hallon	AG	BSAg	1983				
Hutchinson	Allen R.	AG	BSAg	1950				
Hwang	Yongkee Y.	EG			ME	1989	PhD	1993
Iacovone	Gregory J.	AG	BSAg	1994				
Irwin	Robert W.	EG	BSE	1985				
Isaacs	Linda Kay	AG	BSAg	1987	MS	1994		
Jabrane	Hassan	AG	BSAg	1991				
Jackson	Richard N.S.	EG	BSE	1977				
Jackson, Jr.	John L.	AG	BSAg	1966				
Jacobson	Barry K.	EG	BSE	1985	ME	1988		
Jagtap	Shrikant S.	EG					PhD	1986
Jameson	Nathaniel H.	AG	BSAg	1992				
Jimenez-Zapeta	Anibal D.	EG			MS	1979		
Johnson	Sharon J.	AG	BSAg	1994	MS	1998		
Johnson	Harold Malcolm	EG	BSE	1962	MS	1970		
Johnson	Alan K.	EG	BSE	1981				
Johnston	Jeremy D.	EG	BSE	1996				
Johnston	Edward C.	AG	BSAg	1990				
Jones	Richard A.	EG	BSE	1972				
Jones	Marion F.	EG	BSE	1964				
* Jordan	Jonathan David	EG	BSE	1985	ME	1987	PHD	1994
Joughin	Alan R.	EG	BSE	1983				
Justiniano	Jose Percy	EG	BSE	1990				
Kailasapillai	Suthan	EG	BSE	1997				
Kamien	Scott M.	EG	BSE	1985				
Kauffman	Brian C.	EG	BSE	1989				
Kebeli	Hasan	EG			ME	1998		
Keene	Rhett	EG	BSE	1997				



Keiber	Eric	AG	BSAg	1997				
Kelley	Hunter C.	AG	BSAg	1948				
Kelly	Timothy J.	EG	BSE	1984				
Kelly	Bryce R.	AG	BSAg	1989				
Kemp	Michael David	AG	BSAg	1988				
Kendrick	Oliver R.	EG	BSE	1961				
Khuri	Ramzi Suhail	AG			MS	1987	PhD	1990
Kiker	Gregory Alan	EG	BSE	1989	ME	1992		
Kiker	Clyde F.	EG	BSE	1962	MS	1965		
Kirby	Patrick V.	EG	BSE	1985				
Kirstein	Robert	AG	BSAg	1982				
Knight	Lloyd A.	EG	BSE	1952				
Knowles	Scott A.	EG	BSE	1994				
Konyha	Kenneth D.	EG	BSE	1980	ME	1983		
Krauth	Bernard J.	AG	BSAg	1986				
Krug	Chad	AG	BSAg	1995				
Kruse	John E.	AG	BSAg	1992				
Ku	Hsiao-Ching	EG			MS	1976		
Kuharske	Charles O.	AG	BSAg	1991				
Kurz, Jr.	Harold E.	EG	BSE	1996				
Lahlou	Ali	AG	BSAg	1993				
Laird	Lance	EG	BSE	1987				
Lal	Harbans	EG					PhD	1989
Lamb	Scott	EG			ME	1996		
Lambert	Jerry R.	EG	BSE	1958	MS	1961		
Lamothe	Carolyne	AG	BSAg	1997				
Lands	Christopher	AG	BSAg	1997				
Langley	Gretchan L.	AG	BSAg	1993				
Larrauri	Albert T.	EG	BSE	1969				
Lawrence, Jr.	Thomas J.	AG	BSAg	1987				
Lazar	Jeffrey Stuart	AG	BSAg	1986				
Leadbetter	Kevin R.	EG	BSE	1995				
Leconte	Thierry	AG	BSAg	1994				
Lee	Hyung-Jib	EG					PHD	1996
Lester	Lynette Kay	AG	BSAg	1979				
Lewis	Philmer G.	AG	BSAg	1996				
Li	Ling	EG			MS	1989		
Li	Liyong	EG					PhD	1998
Liang	Sheng L.	EG					PHD	1990
Lindahl	Lennart E.	EG	BSE	1965				
Lingle	Jason Gilmore	AG	BSAg	1985				

LoCurto	Gregory	EG			ME	1997		
Loetscher	Christopher	EG			ME	1996		
Lopez	David E.	AG	BSAg	1982				
Lopez-Torres	Jose J.	EG	BSE	1994				
Lowe, III	James A.	AG	BSAg	1970				
Luchte	Mark A.	EG	BSE	1986				
Luebbe	Thomas	AG	BSAg	1993				
Lunsford	James S.	AG	BSAg	1993				
Lyday	Steven	EG	BSE	1996				
Lyon	Harry W.	AG	BSAg	1968	MSAg	1969		
Lyons	Tammy Lanette	EG	BSE	1992				
Mac Donald, III	Hugh	AG	BSAg	1992				
Macchio	Vito R.	AG	BSAg	1982	MS	1985		
MacDonald	Hugh	AG	BSAg	1992				
MacVicar	Thomas K.	EG	BSE	1976				
Magar	Michael E.	AG	BSAg	1994				
Major	Larry J.	EG	BSE	1983				
Malpass	Jeffery D.	EG	BSE	1986	ME	1988		
Manson	Sean	EG	BSE	1996				
Manuel	Mark A.	EG	BSE	1986				
Marques Da Silva	Filipa	EG			ME	1995		
Marquez	Angel C.	AG	BSAg	1983				
Marsh, Jr.	James L.	AG	BSAg	1993				
Marshall (Velasco)	Ana Maria	EG	BSE	1983				
Martin	Susan	AG	BSAg	1996				
Massey	Richard Scott	AG	BSAg	1979				
Matthews	Thomas C.	??	??	1952				
Mazumder	Indrajit	EG			MS	1977		
McCardle	Jeffery W.	AG	BSAg	1994				
McCawley	Brian T.	AG	BSAg	1992				
McCulloch	Rodger	AG	BSAg	1975				
McDonald	Brian P.	AG	BSAg	1994				
McEvoy, Jr.	John P.	EG	BSE	1971				
McGahee	Stuart Eugene	EG	BSE	1993				
McGinty	Paul F.	EG	BSE	1989				
McGlashan	Primrose A.	EG			ME	1993		
McHenry	Christopher	AG	BSAg	1992				
McIntosh	Freddie P.	EG	BSE	1966	MS	1968		
McMahon	Brian R.	EG	BSE	1976	ME	1977		
McNeely	Arthur M.	AG			MAg	1950		
McQueen	Thomas R.	AG	BSAg	1994				



Means (Hill)	Sandra Lee	EG	BSE	1988	ME	1991		
Mederos	Evelio F.	EG	BSE	1966				
Mejia	German D.	EG	BSE	1982				
Mekvanich	Kriangkrai	EG			ME	1979		
Melaika	Nader F.	EG			ME	1986		
Melvin	Thomas L.	AG	BSAg	1952				
Mena	Odalis	AG	BSAg	1997				
Menear	John R.	EG	BSE	1960				
Mess	Jeffrey K.	EG	BSE	1980				
Messmore	Leslie L.	AG	BSAg	1989				
Meysami	Behrouz	EG					PHD	1992
Michels (Lapsker)	Jillana Eve	EG	BSE	1983				
Minton	Mary E.	AG	BSAg	1996				
Minton, Jr.	Edwin J.	AG	BSAg	1949				
Miragliotta	Jon	AG	BSAg	1998				
Mofleh	Mohamad	EG					PhD	1997
Montealegre	Julio	AG	BSAg	1997				
Montoya	Roger E.	AG			MS	1992		
Moody	Vertigo	EG	BSE	1995	ME	1997		
Moore	Boyd G.	EG	BSE	1971				
Moore	Julian S., Jr.	AG	BSAg	1961				
Moran	Christopher M.	EG			ME	1981		
Moran	Debora M.	EG	BSE	1982				
Morean	Leonardo E.	AG	BSAg	1982				
Morgan	Gary J.	EG	BSE	1970				
Morgan	Glenn C.	AG	BSAg	1992				
Morin	Mandy	EG	BSE	1997				
Moynihan	Mr. Mark J.	EG			MS	1991		
Munilla	Roberto D.	EG			ME	1984		
Murray	Brian D.	AG	BSAg	1994				
Murray, III	George R.	AG	BSAg	1983				
Murrell	Bradley	AG	BSAg	1995				
Musgrove	Richard J.	EG	BSE	1973				
Myers	Julian Mostella	AG			MS	1953		
Myhre	Bruce Ernest	EG			ME	1988	PhD	1996
Nabers	Bennie R.	EG	BSE	1972				
Nathan	Philip A.	EG	BSE	1981				
Nayak	Nithin	EG	BSE	1998				
Negahban	Babak	AG			MS	1986	PHD	1995
Nelson	Donald M.	EG	BSE	1969				
NeSmith	Charles T.	EG	BSE	1952				

Neuhofer	Christopher T.	AG	BSAg	1990				
Neuhofer	Andrew J.	AG	BSAg	1986				
Neuhofer	Louis A.	AG	BSAg	1993				
Newbury	George H.	AG	BSAg	1953				
Ngunjiri	Godfrey M.N.	AG	BSAg	1982	MS	1984		
Nguy	Quoc-Cuong	EG			MS	1974		
Nguyen	Thanh Nga	EG	BSE	1991				
Nichols	Andrew George	AG	BSAg	1989				
Nichols	Richard C.	EG	BSE	1960				
Nipper	Michael T.	EG	BSE	1993				
Niroorang	Hamid R.	EG	BSE	1983				
Novella	Ralph	AG	BSAg	1985				
Nychyk	Randall C.	AG	BSAg	1994				
Nychyk, Jr.	Timothy	AG	BSAg	1997				
Odom	William Frederick	AG	BSAg	1987				
Oppenheim	Paul	EG	BSAg	1977	MSAg	1978		
Orth	James R.	EG	BSE	1989				
Osterberg	Charles G.	EG	BSE	1970	MS	1972		
Otiniano	Susanmarie Y.	AG	BSAg	1995				
Owens	John Martin	EG					PHD	1993
Paez	Richie	AG	BSAg	1995				
Palazoglu	Tunc	EG			ME	1997		
Palmer	Steve O.	AG	BSAg	1994				
Panagakis	Panagiotis	EG			ME	1987		
Panesar	Balwinder Singh	EG					PhD	1993
Parmer	Robert M.	AG	BSAg	1995				
Patel	Narendra L.	EG	BSE	1994				
Payne	Jeffrey Floren	EG	BSE	1985	ME	1987		
Peebles, III	Henry Gregg	EG	BSE	1990				
Pensabene	David A.	AG	BSAg	1985				
Peralta Montilla	Cesar G.	EG	BSE	1983				
Perera	Carlos D.	EG	BSE	1980				
Peres	Jeremy S.	AG	BSAg	1994				
Perez	Carlos E.	EG	BSE	1994				
Perez	Porfirio Eduardo	EG	BSE	1991				
Perry, Jr.	Thomas	EG	BSE	1989	ME	1991		
Perry, Jr.	Herbert E.	AG	BSAg	1991				
Peters	Alexander F.	EG	BSE	1994				
Petrell	Royann Jean	EG					PhD	1988
Petrone	Carolyn	AG	BSAg	1995				
Phelps	Laurence M.	EG			MS	1979		

Philmon	William F.	AG	BSAg	1951			
Phoek	Dorey Phin	EG	BSE	1995			
Piercefield	Dayne R.	EG	BSE	1962			
Pinkepank	William R.	EG	BSE	1977	ME	1980	
Pirozzoli	Heather J.	AG	BSAg	1992	MS	1995	
Pitt	Dominique W.	EG			ME	1980	
Plum	Kurt Rascher	AG	BSAg	1985			
Polinkas	Jonathan P.	AG	BSAg	1984			
Pollard	Shawn H.	AG	BSAg	1994			
Ponce	Juan E.	EG	BSE	1968			
Pool	Thomas A.	EG					PhD 1989
Porter, III	Frank L.	EG	BSE	1965			
Postel, Jr	Wilbur	AG	BSAg				
Prince	Frank Antoan	AG	BSAg	1982			
Prithchard	Robert T.	EG			ME	1994	
Purdy	Terrance D.	EG	BSE	1977			
Purvis	Douglas C.	AG	BSAg	1994			
Putnam	Steven G.	EG	BSE	1974			
Quirie	Christopher T.	AG	BSAg	1994			
Ramey	John	EG	BSE	1994			
Ramsey, III	James Perry	AG	BSAg	1978			
Randell	Wynn Jennings	AG	BSAg	1987			
Rankin	Laura	EG	BSE	1996			
Raulerson	Daniel	AG	BSAg	1996			
Reck	William R.	EG	BSE	1990	ME	1992	
Redding	Cecilia D.	EG	BSE	1982			
Register	Michael Allen	EG	BSE	1988	ME	1991	
Register	Amos K.	AG	BSAg	1994			
Remelius	David	AG	BSAg	1996			
Ricciardi	Dino M.	EG	BSE	1982			
Richard	Raymond P.	AG	BSAg	1984			
Richardson	Curtis D.	AG	BSAg	1992			
Richert	Michael	AG	BSAg	1996			
Richmond	Jason	AG	BSAg	1998			
Riera	Ricardo	EG	BSE	1991			
Rivas	Jorge Luis	AG	BSAg	1982			
Roberts	Darrell L.	EG	BSE	1962			
Roberts	James B.	AG	BSAg	1996			
Robertson	Alton F.	EG	BSE	1962			
Robertson, Jr.	Boyd C.	EG	BSE	1967			
Robinson	Kevin Andrew	AG	BSAg	1988			

Rodriguez	Adolfo L.	AG	BSAg	1950				
Rodriguez	Jose	AG	BSAg	1997				
Rodriguez	Alfredo C.	EG					PhD	1987
Rodriguez	Freddy G.	AG	BSAg	1982				
Rodriguez	Alvaro	EG	BSE	1986				
Rodriguez	Jesus	AG	BSAg	1995				
Rogers	Jeffrey William	EG			ME	1987		
Rogers	Clarence J.	AG			MA	1951		
Rojas	Fernando	AG	BSAg	1997				
Romero	Robert A.	EG					PhD	1987
Rose	Jeanie Patrick	AG	BSAg	1965				
Ross	Ira J.	EG	BSE	1955				
Roth	Milton	EG	BSE	1990				
Rountree	Chris Hurley	EG	BSE	1991				
Roy	Brian Loren	EG			ME	1988		
Royce	Frederick S.	AG	BSAg	1994	MS	1996		
Rumman	Andrei L.	EG	BSE	1995				
Sackie-Mensah	Emmanuel	EG	BSE	1992				
Sagul	Timothy J.	EG	BSE	1981				
Sala, II	Nestor R.	AG	BSAg	1994				
Salazar	Carlos A.	EG			ME	1980		
Salinas	Gerardo Jose	EG	BSE	1988				
Sanchez	Julio A.	EG	BSE	1980				
Santiesteban	Theodore G.	EG	BSE	1994				
Sapru	Vimal	EG					PhD	1991
Sasser	Robert	AG	BSAg	1997				
Sastry	Sudhir K.	EG			MS	1976		
Scantzoulis	Michael S.	AG	BSAg	1993				
Schanze	Thomas J.	EG	BSE	1982	ME	1984		
Schinstock	Jack L.	EG			MS	1974		
Schirard	Sydney Michael	AG	BSAg	1984				
Schmid	Andrew	EG	BSE	1995				
Schmidt	Andrew Thomas	EG	BSE	1995				
Schmidt III	George M.	EG					PhD	1992
Scholtz, III	Richard V.	EG	BSE	1997				
Schooley	Diana	AG	BSAg	1985				
Schooley (Brophy)	Diana L.	AG	BSAg	1985				
Schreiner	Michael John	EG	BSE	1993				
Schuler	Doris Suzanne	EG	BSE	1981				
Schumacher	Robert D.	EG	BSE	1986				
Schuster	Linda A.	AG	BSAg	1993				

Scott	Patrick A.	EG			MS	1993		
Scott	David	EG	BSE	1997				
Scott	Brian Dewey	AG	BSAg	1985				
Scott	William B.	??			MS	1973		
Scruggs	William M.	AG	BSAg	1949				
Seidman	Penny L.	AG	BSAg	1992				
Sellers	Richard Quince	EG	BSE	1990				
Semmes, II	Robert Howard	AG	BSAg	1986	MS	1988		
Sergent	Derek	AG	BSAg	1998				
Shaske		AG	BSAg	1987				
Sheldon	Henry A.	EG	BSE	1970				
Shinn, III	Charles M.	AG	BSAg	1981				
Shore	Robert F.	EG	BSE	1981				
Siaka	Kone	EG			ME	1988		
Siegmeister	Joseph A.	AG	BSAg	1994				
Sifontes	Jose R.	EG					PHD	1994
Simmons	Michael	AG	BSAg					
Simmons	Michael Keith	AG	BSAg	1985				
Simon	Jude	EG	BSE	1992				
Simon	Jonathan Hiram	EG	BSE	1993				
Siqueira	Luis Roberto T.	EG			ME	1977		
Skinner	Thomas C.	AG	BSAg	1946	MAG	1947		
Slaughter	David Charles	EG					PhD	1987
Smith	Matthew Clay	EG					PhD	1988
Smith	George Stephen	AG	BSAg	1993				
Smith	Randall Joseph	AG	BSAg	1993				
Smith	Jay Luke	AG	BSAg	1995				
Smith	Ronald D.	AG			MS	1992		
Smith	Maria	AG			MS	1991		
Smith	Steven Michael	AG	BSAg	1984				
Smith	Vernon C.	EG	BSE	1971				
Smith, Jr.	Richard C.	EG	BSE	1985				
Smolka	Joshua	AG	BSAg	1995				
Snyder	Scott L.	EG	BSE	1994				
Snyder	Raymond H.	AG	BSAg	1996				
Snyder	Gary V.	EG			ME	1986		
Soe	Han	EG	BSE	1996				
Solares-Prem	Miguel A.	EG			ME	1974		
Soongswang	Mr. Kitti	AG			MS	1991		
Sosa	Jorge C.	EG	BSE	1985				
Soudign	Marc N.	EG	BSE	1986				

Spencer	Curtis M.	EG	BSE	1980				
Spickard	Wesley A.	EG	BSE	1979	ME	1981		
Spinks	David A.	AG	BSAg	1975				
Spinning	Mark Edward	AG	BSAg	1993				
Spruce	Michael David	EG	BSE	1991				
Srivastava	Upasana	EG	BSE	1997				
Sriwatanapongse	Ms. Apira	EG			ME	1994		
Staack	Mark P.	AG	BSAg	1996				
Stadthagen	Mr. Roberto J.	EG			ME	1995		
Stanley	Jeffrey A.	AG	BSAg	1990				
Steidenger	Gregg W.	AG			MS	1988		
Stevens	Todd	AG	BSAg	1996				
Stevens	Lee Frederick	AG	BSAg	1985				
Stevenson	Andrew E.	EG	BSE	1955				
Stewart	George A.	AG	BSAg	1995				
Stewart, III	John S.	EG	BSE	1969	MS	1972		
Stice	Ernest	AG	BSAg	1997				
Still	David A.	EG	BSE	1982	ME	1984		
Stinnett	B. Scott	AG	BSAg	1993				
Stocker	Julie A.	AG	BSAg	1992				
Stone	Kenneth Coy	EG					PHD	1987
Story	George E.	EG	BSE	1955				
Stowell	Donald D.	EG	BSE	1977				
Strenth	Jason Glenn	EG	BSE	1994				
Stribling	James Joseph	AG	BSAg	1987				
Striby	Christopher J.	EG	BSE	1982				
Strickland	Leo E.	AG	BSAg	1947	MA	1949		
Strickland	Lantis H.	AG	BSAg	1948	MA	1949		
Strickland	Stuart B.	AG	BSAg	1990				
Strickland	Jody T.	EG			ME	1988		
Stuck	James	EG					PHD	1996
Sukotjo	Ms. Sietiati	EG			MS	1994		
Sumner	Jeffrey M.	EG	BSE	1995				
Sumner	Michael A.	AG	BSAg	1995				
Swain	Thomas Allen	AG	BSAg	1980				
Sweeb	Roy D.	EG	BSE	1990				
Swindell	Park T.	AG	BSAg	1935				
Taee	Khosrow	EG	BSE	1981				
Talasila	Panchanadham C.	EG					PHD	1992
Talbot	Michael T.	EG	BSE	1971	ME	1973	PHD	1987
Tan	Yurong	EG					PHD	1994



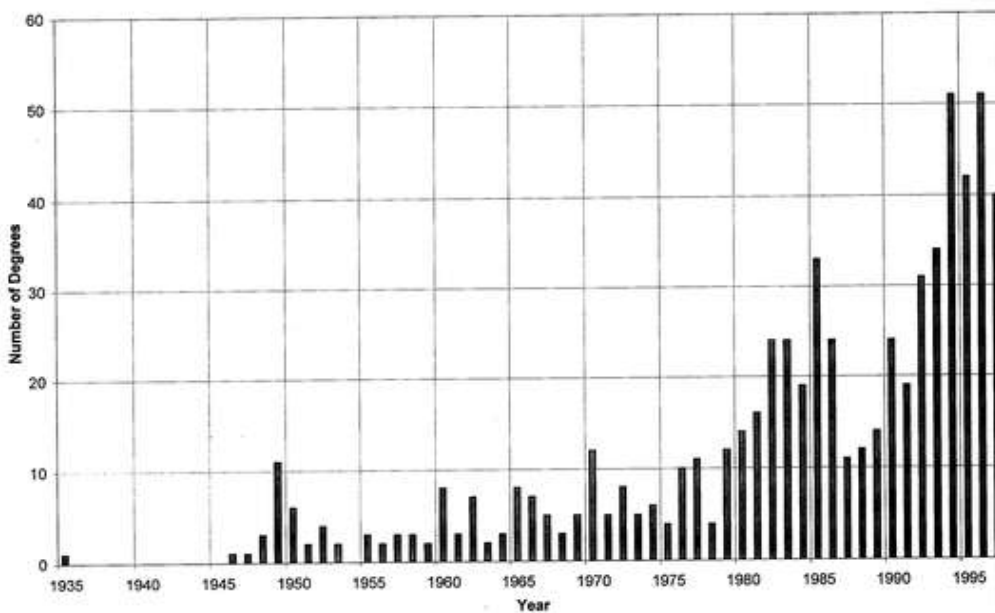
Tan	Chih-hung	EG					PhD	1998
Tan	Chu Ming	AG	BSAg	1995				
Taylor	George Frederick	EG	BSE	1970				
Taylor	Steven E.	EG	BSE	1983	ME	1985		
Taylor	Lawrence R.	AG	BSAg	1994				
Taylor, Jr.	Robert B	EG	BSE	1985	ME	1987		
Teare	Kurtis B.	AG	BSAg	1995				
Teerlinck	Mr. Ronald D.	AG			MS	1994		
Teixeira	A. Allan	AG	BSAg	1990	MS	1991		
Tekounegning		EG			MS	1986		
Terrell	Phillip G.	AG	BSAg	1974				
Thach	Christopher B.	EG	BSE	1975				
Thomas	Mark W.	EG	BSE	1995				
Thomas	Michael V.	EG			ME	1984	PhD	1988
Thompson	Angela K.	AG	BSAg	1991				
Thompson	David E.	AG	BSAg	1990				
Thompson	Richard Hampton	EG	BSE	1987	ME	1988		
Thomson	Christian R.	AG	BSAg	1996				
Thomson	Steven J.	EG					PhD	1990
Thourot	Charles Scott	EG	BSE	1996	ME	1997		
Tichenor	Jack	AG	BSAg	1973	MSAg	1974		
Tolliver, III	Ernest T.	EG	BSE	1993				
Tomlinson	Earl Allan	EG	BSE	1977	ME	1979		
Torres	Jose Antonio	EG	BSE	1984	ME	1987		
Townsend, Jr.	Dallas B.	AG	BSAg	1994				
Towson	Douglas F.	EG	BSE	1994				
Tremwel	Terry Keith	EG					PhD	1992
Tricio	Julio A.	EG	BSE	1985				
Tristan	Federico	AG	BSAg	1995				
Tsai	You-Jen	EG					PhD	1985
Tubbs	Ronald	AG	BSAg	1997				
Turner	Marcus Stephen	EG	BSE	1993				
Uphoff	Steven Mark	AG	BSAg	1980				
Uter	Deavon C.	EG	BSE	1995				
Valdejuli	George M.	AG	BSAg	1977				
Van Duyne, Jr.	Giles O.	AG	BSAg	1966				
Vandergrift	Stephen C.	EG	BSE	1980				
Vanderheyden	Michael	EG	BSE	1982				
VanToorenburg	Steven P.	EG	BSE	1995				
Varela	Benito	EG	BSE	1986				
Veal	Charles David	EG	BSE	1965	MS	1966		

Vellidis	George	EG					PhD	1989
Victor	Patrick R.	EG	BSE	1989	ME	1991		
Vogel	Jason	AG	BSAg	1998				
Volkmer	Jan M.	AG	BSAg	1996				
Wagener	Gregory M.	AG	BSAg	1993				
Waggoner	Stanley A.	EG			ME	1974		
Waldron	Gregory J.	AG	BSAg	1991				
Walling	Hugh Bennett	EG	BSE	1984				
Waltuck	Steven R.	AG	BSAg	1993				
Wang	Norman Lee-Zen	EG			MS	1973		
Wasdin	Thomas A.	EG	BSE	1960				
Waters, Jr.	James T.	EG	BSE	1994				
Watford	Charles L.	AG	BSAg	1949				
Webb	Elizabeth L.	EG	BSE	1994				
Weeks	Herbert H.	AG	BSAg	1950				
Weldon	John Henry	AG	BSAg	1981				
Welt	Bruce A.	EG					PHD	1996
Westgate	John T.	EG	BSE	1972				
Whiffen (Helikson)	Helen Jean	AG			MS	1989		
White	Gerald	AG	BSAg	1995				
Whittle	Joseph	EG	BSE	1996				
Wiggins	Terrell Scott	EG	BSE	1985	ME	1987		
Wilkerson	John A.	AG	BSAg	1970				
Willcutts	Mr. John F.	EG			ME	1994		
Williams	Earl Jay	EG			MS	1966		
Williams	Daniel J.	EG	BSE	1965				
Williams	Carolyn A.	AG	BSAg	1991				
Williams	Kevin O.	AG	BSAg	1992				
Williams (Woeste)	Lori E.	EG	BSE	1986	ME	1988		
Willis	John	AG	BSAg	1995				
Willis	Christopher	AG	BSAg	1992				
Willits	Daniel H.	EG			MS	1967		
Wills	Leigh D.	AG	BSAg	1996				
Wilson (Shelton)	Denise Marie	EG	BSE	1992			PhD	1995
Wilson, Jr.	Edward B.	EG	BSE	1959				
Winburn, Jr.	Ovil A.	AG	BSAg	1990				
Windham	James R.	EG	BSE	1967				
Wise, III	George G.	EG	BSE	1970				
Wolfe	David W.	EG	BSE	1980	ME	1985		
Wood	Tracy A.	AG	BSAg	1993				
Wood	Arthur F.	EG	BSE	1956				

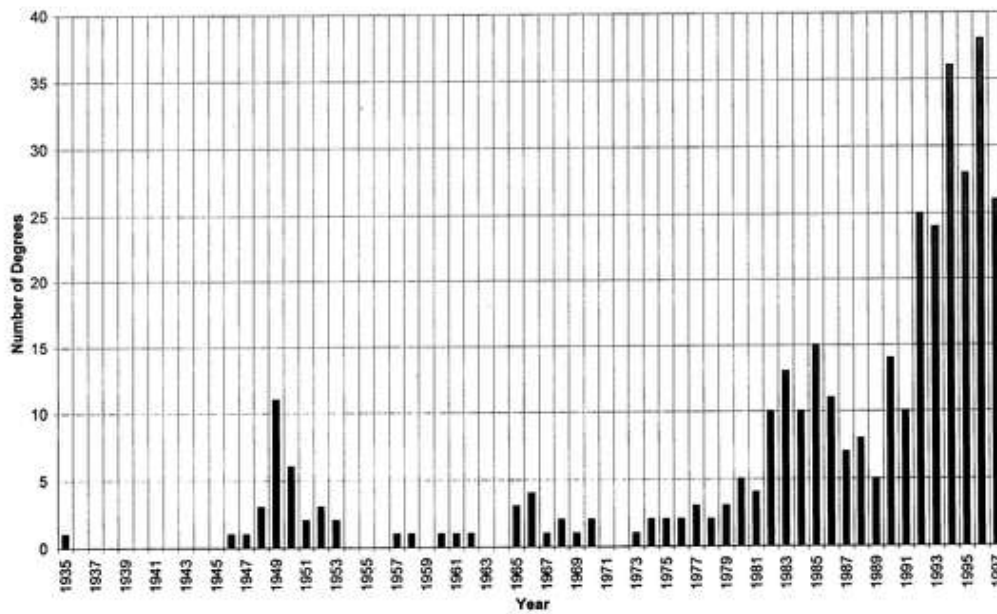


Wright	Jonathan	AG	BSAg	1997				
Xin	Jiannong	EG			ME	1990	PHD	1995
Yaeger	Tim	AG	BSAg	1995				
Yaw	Boris	EG	BSE	1997				
Young	Daniel T.	EG			ME	1979		
Young, Jr.	Courtland E.	EG	BSE	1957				
Youngblood	Mary Alice	AG	BSAg	1990	MS	1993		
Yun	Jae	EG	BSE	1996				
Zahn	Wayne C.	AG	BSAg	1994				
Zajicek	Paul W.	AG			MS	1986		
Zakaria	Abdul Aziz	EG			MS	1976		
Zangwill	Jonathan H.	EG	BSE	1994				
Zapata	Alfredo R.	EG			ME	1977		
Zhang	Yan	EG					PhD	1997
Zimmerman	Dale W.	EG	BSE	1965				
Zolner	Keith	AG	BSAg	1997				
Zorovich	Paul M.	AG	BSAg	1966				

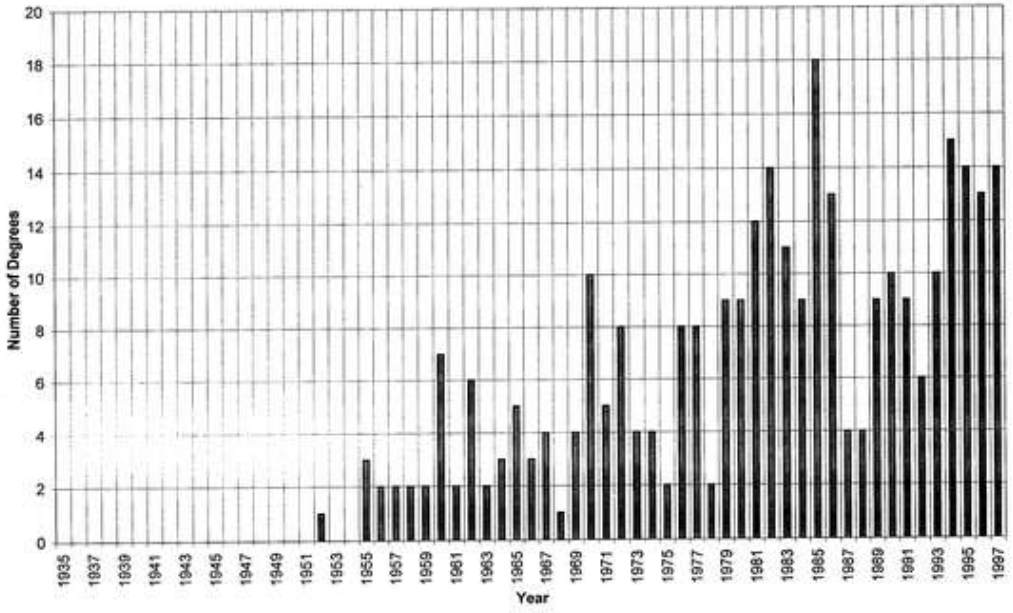
**Bachelor's Degrees**



**Bachelor's Degrees in Agriculture**



### Bachelor's Degrees in Engineering



**AGRICULTURAL & BIOLIGICAL ENGINEERING SCHOLARSHIPS**

**Florida Section ASAE Scholarship**

**Marlin Eller Memorial / MWI Scholarship**

**Dalton S. Harrison / Florida Irrigation Society Scholarship**

**Rush E. Choate Scholarship**

**John B. Boy / US Sugar Scholarship**

**FLORIDA SECTION ASAE SCHOLARSHIP**

<u>Year</u>	<u>Name</u>
1970	Henry Sheldon
1971	Michael Talbot
1973	Gene Britt
1973	Logan Fink
1973	Billy Harrison
1973	Robert Hinton
1975	Patrick Brannon
1975	Patrick Burke
1975	Wesley Burnett
1975	Gilbert Canton
1975	John Cofer
1975	Anthony Dzegede
1975	David Ferriera
1975	Karl King
1975	Terrance Purdy
1975	Wesley Roan
1975	Donald Stowell
1975	Christopher Thach
1976	Patrick Brannon
1976	Allan Johnson
1977	Anthony Dzegede
1977	Allan Johnson
1977	Paul Oppenheim
1977	Terrance Purdy
1977	Timothy Sagul
1978	James Conrad
1978	Paul Faeth
1978	Julius Hunter
1978	Wes Spickard
1979	Paul Faeth
1979	Richard Hanson
1979	Anton Mogilevsky
1979	Christopher Reilly
1979	Erich Starzinger
1980	Kirk Dolan
1980	Gregory Riski
1981	John Capece
1981	George Murray III
1982	Peter Coultas
1982	Henry Hooker III

1983	Donald Eddington
1984	Darlene Archer
1984	Robert Semmes
1985	Nicholas Morris
1986	John Drake
1986	Frederick Hubbard
1986	Lance Laird
1988	Lisa Bean
1988	Tammy Lyons
1988	Christopher Neuhofter
1988	Michael Spruce
1989	Denise Shelton
1989	Allan Teixeira
1989	Kevin VanNess
1991	Stephanie Guyer
1991	Tammy Lyons
1991	Michael Schreiner
1992	John Brealey
1992	Jeffery McCardle
1992	Jason Shiveler
1993	Corey Hines
1993	James Herren
1994	Mandy Morin
1994	Frederick Royce
1994	Joseph Siegmeister
1995	Brad Burtscher
1995	B. J. Lackey
1995	John McGarity
1996	Stephanie Barcelona
1996	Louis Capezza
1996	Scott Tubbs
1997	Adam Heltemes
1997	Robert Sasser
1998	Kelly Brock
1998	Kevin Chandley
1998	Baltazaro Prado

**MARLIN ELLER MEMORIAL / MWI SCHOLARSHIP**

<u>Year</u>	<u>Name</u>
1975	Thomas K. Macvicar
1976	Earl Allan Tomlinson
1977	Mark D. Barcelo
1979	Curtis Spencer
1980	Kenneth D. Konyha
1981	Deborah Moran
1982	John Capece
1983	Lori Elizabeth Woeste
1984	Terrell Scott Wiggins
1985	James A. McDonough
1986	Gregory A. Kiker
1988	Porfirio Perez
1989	Jacques Bichier
1990	John P. O'Connor
1991	Corey D. Hines
1992	Brian T. Sheahan
1993	Fred Royce
1994	Brett J. Bartz
1995	Melissa Montgomery
1996	Louis A. Capezza
1997	Christina James
1998	Eva Velez

**DALTON S. HARRISON / FLORIDA IRRIGATION SOCIETY SCHOLARSHIP**

<u>Year</u>	<u>Name</u>
1976	Brian R. McMahon
1977	Janice Lynn Becker
1977	Wesley A. Spickard
1977	Mark D. Barcelo
1977	William R. Pinkepank
1978	Timothy J. Sagul
1978	Michael C. Bauer
1978	Steve Cossette
1978	David W. Wolfe
1979	Gary A. Clark
1979	David S. Wilkinson
1979	Kirk Dolan
1980	Gary A. Clark
1980	David S. Wilkinson
1981	Deborah M. Moran
1981	Kirk Dolan
1981	Thomas J. Schanze
1982	Machael Van Der Heyden
1982	Kevin H. Hurst
1982	Timothy J. Kelly
1983	Robert Bruce Christmas
1983	Gregory A. Kiker
1983	Gary P. Bethune
1983	W. Albert Byrd, Jr.
1984	Jeff Payne
1984	Brian Scott
1984	Gregory A. Kiker
1984	Jonathan D. Jordan
1985	James W. Flynt, Jr.
1985	Terrel Scott Wiggins
1986	Jeffrey D. Malpass
1987	Michael D. Spruce
1987	Christopher Neuhofer
1988	Jacques Bichier
1988	Kenneth Roberts
1988	William R. Reck
1989	Michael Holloway
1989	William R. Reck
1990	Mark W. Avery



1991	Mark W. Avery
1991	Scott Knowles
1991	Gregory Holmberg
1992	Brian Ferber
1992	Corey D. Hines
1993	Steven vanToorenberg
1993	Audie G. Ham
1994	Deavon Uter
1994	Wayne Zahn
1995	B. J. Lackey
1995	Mandy L. Morin
1996	William G. Steube
1996	Han Soe
1997	Pattie Lewis
1998	Jesse Markle
1998	Dan Jones

**RUSH E. CHOATE SCHOLARSHIP**

<u>Year</u>	<u>Name</u>
1988	Lisa M. Bean
1990	Mark A. Arnold
1991	Brett J. Bartz
1992	Jeffrey M. Sumner
1994	Charles Scott Thourot
1996	Han Soe
1996	Gerald A. Godwin
1998	Sasha Ferguson

**JOHN B. BOY / U. S. SUGAR SCHOLARSHIP**

<u>Year</u>	<u>Name</u>
1989	Gregory A. Kiker
1989	Michael D. Spruce
1989	William R. Reck
1989	Michael D. Spruce
1990	William R. Reck
1990	Michael D. Spruce
1990	Denise M. Shelton
1990	Michael D. Spruce
1991	Denise M. Shelton
1991	Marcus S. Turner
1991	Denise M. Shelton
1991	Marcus S. Turner
1992	Denise M. Shelton
1992	Marcus S. Turner
1992	Marcus S. Turner
1992	Jason G. Strenth
1992	Jason G. Strenth
1993	Marcus S. Turner
1993	Jason G. Strenth
1993	Sherry A. Allick
1994	Jason G. Strenth
1994	Steven vanToorenberg
1994	Steven vanToorenberg
1994	Anthony Cunningham
1995	Steven vanToorenberg
1995	Anthony Cunningham
1995	Charles Scott Thourot
1995	Corey D. Hines
1996	Charles Scott Thourot
1996	Corey D. Hines
1996	Corey D. Hines
1996	Mandy L. Morin
1997	Mandy L. Morin
1998	Daniel Crews
1998	Adam Heltemes

## CURRICULA

1952 Bachelor of Agricultural Engineering

1973 Bachelor of Science in Agricultural Engineering

1973 Bachelor of Science in Agriculture, Major in Mechanized Agriculture

1998 Bachelor of Science in Agricultural & Biological Engineering

1998 Bachelor of Science in Agricultural Operations Management

1952

## CURRICULUM

## BACHELOR OF AGRICULTURAL ENGINEERING

## DEPARTMENT COURSES

<u>Course</u>		<u>Credit</u>
AG 301	Drainage and Irrigation	3
302	Farm Motors	3
303	Farm Shop	3
306	Farm Machinery	3
401	Farm Structures	3
402	Farm Concrete	2
403-4	AGE Investigations	2
406	Dairy Engineering	3
407	Farm Shop Power Equipment	3
408	Soil and Water	3
409	Seminar	1
501	Seminar	2
570	Research	3-6
571	Research Problems in Irrigation	3-6

1973

CURRICULUM LEADING TO THE DEGREE OF BACHELOR OF SCIENCE  
IN AGRICULTURAL ENGINEERING  
UNIVERSITY OF FLORIDA

<u>Course</u>		<u>Credit</u>
CSS 111, 112, 113	American Institutions	9
CEH 131, 132, 133	Comprehensive English	9
CHN 251, 252, 253	The Humanities	12
EGC 180	Engineering Concepts & Studies	1
CY 211, 212, 213	General Chemistry & Qualitative Analysis	12
MS 301, 312, 303, 304	Analytical Geometry & Calculus	20
MS 305	Elementary Differential Equations	3
PS 215, 216, 217	General Physics & Calculus	9
PS 225, 226, 227	Physics Laboratory	3
	Physical Education Requirement	3
ISE 350	Digital Computer Programming	2
	Biological Science Requirement	5
EGR 193	Engineering Graphics	3
ISE 351	Numerical Techniques	2
or		
ISE 357	Analog Computer Principles (2)	4
ESM 301	Engineering Mechanics, Statics	4
ESM 302	Engineering Mechanics, Dynamics	4
ESM 303	Strength of Materials	4
ESM 311	Fluid Mechanics	4
or		
CE 320	Hydraulics 1 (4)	5
EE 301	Introduction to Electrical Engineering	5
ME 360	Thermodynamics	4
MTL 300	Materials	4
or		
CE 340	Civil Engineering Materials (4)	2
CE 300	Engineering Measurements 1	5
SLS 330	General Soils	3
STA 330	Engineering Statistics	3
	Animal Science Requirement	3
	Plant Science Requirement	3
AGE 404	Analytical & Professional Methods for Agricultural Engineers	4
AGE 410	Heat & Mass Transfer in Biological Systems	4
AGE 421	Agricultural Structures	5
AGE 426	Engineering Principles of Plant & Animal Environment	4
AGE 450	Soil & Water Conservation Engineering	4
AGE 451	Drainage & Irrigation Engineering	4
AGE 460	Agricultural Tractors & Power Units	3
AGE 461	Agricultural Field Machines	5
	Electives	30

1973

## CURRICULUM

BACHELOR OF SCIENCE IN AGRICULTURE  
MAJOR IN MECHANIZED AGRICULTURE

<u>Course</u>		<u>Credit</u>
SSC 231, 232, 233	American Institutions	9
CEH 111, 121, 122	Comprehensive English	9
HUM 211, 212, 213	Humanities	12
BTY 181	Introductory Botany	5
BTY 203	General Botany	5
ZY 201	Introductory Zoology	4
MS 102	Algebra & Trigonometry	5
MS 201, 301	Analytical Geometry & Calculus	10
CY 201, 202, 203	General Chemistry & Qualitative Analysis	12
PS 211, 212, 213	General Physics	12
PS 221, 222, 223	Physics Lab	3
FRE 301	Principles of Food Resources Economics	5
FRE 310	Farm & Firm Management	4
SCH 240	Voice & Articulation	4
EH 302	Basic Technical Writing	3
SLS 330	General Soils	5
EG 301	Principles of Entomology	4
PSY 201	General Psychology	4
AL 309	General Animal Science	4
AY 311	Field Crop Science	4
MGT 310	Principles of Management	4
ATG 201	Elementary Accounting	5
MKG 331	Principles of Marketing	4
FC 341	Citrus Growing	4
MCA 301	Water Management	4
MCA 303	Agricultural Machinery	4
MCA 306	Farm Machinery	4
MCA 401	Farm Buildings	4
MCA 404	Engineering Principles of Food Science	5
AGE 403	Special Topics	3
	Electives	22

1998 – 1999 CURRICULA



CURRICULUM  
BACHELOR OF SCIENCE IN AGRICULTURAL AND BIOLOGICAL ENGINEERING

Agrisystems Engineering Specialization

FIRST YEAR Fall Semester

CHM2045	General Chemistry	3
CHM2045L	General Chemistry Lab	1
MAC2311	Analytical Geometry & Calculus I	4
	Humanities (GE)	3
	Social Science (GE)	3
	Total	14

FIRST YEAR Spring Semester

CHM2046	General Chemistry and Qualitative Analysis	3
MAC2312	Analytical Geometry & Calculus II	4
ENC2210	Technical Writing	3
	Humanities (GE)	3
	Total	13

SECOND YEAR Fall Semester

PHY2048	Physics with Calculus A	3
PHY2055L	Physics with Calculus A Lab	1
CGN3421	Computer Methods in Civil Engineering or computer programming and numerical methods	4
MAC2313	Analytical Geometry & Calculus III	4
	Social Science (GE)	3
	Total	15

SECOND YEAR Spring Semester

PHY2049	Physics with Calculus B	3
PHY2056L	Physics with Calculus B Lab	1
EGM3311	Introduction to Engineering Analysis or	3
MAP2302	Elementary Differential Equations	
EGM2511	Engineering Mechanics-Statics	3
EML3007	Elements of Thermodynamics & Heat Transfer	3
	Humanities (GE)	3
	Total	16

GE: General Education

\* Note: Summer semesters can be used to make up General Education requirements or Lower Division (first and second year) prerequisites for your major.

\*\* May be taken as a substitute for CHM2046. Some selective courses and graduate courses may require CHM2046 & CHM2046L as prerequisites.

## Agrisystems Engineering Specialization

## THIRD YEAR Fall Semester

EGM3400	Engineering Mechanics-Dynamics	2
ABE3012	Introduction to Design & Anal. for Agr. Eng	3
ABE3042C	Agricultural & Biol Engineering Design 1	2
ABE3612C	Heat & Mass Transfer in Bio Sys	4
	Biological Sciences	
	(BSC2005, ABE2062, BSC2010 or BOT2010C)	3
	Total	14

## THIRD YEAR Spring Semester

ABE3652C	Physical & Rheological Prop of Biol Materials or	3
CGN3501	Civil Engineering Materials (4)	
ABE3212C	Natural Resources Conservation Engineering	4
EML3023	Computer Assisted Drafting and Design	3
ABE4303C	Structural & Environmental Design	3
	Biological Sciences Electives	2
	Total	15

## Summer Semester \*

EGM3520	Mechanics of Materials	3
CGN3710	Exp & Instrumentation in Civil Eng	3
	Technical Electives (Advisor approved)	3
	Biological Sciences Electives	3
	Total	12

## FOURTH YEAR Fall Semester

SOS3022	General Soils	3
SOS3022L	General Soils Lab	1
ABE4171C	Power and Machines for Biological Systems	4
EGN3353	Fluid Mechanics or	3
CWR3201	Hydrodynamics	
	Technical Electives ((ABE) Advisor approved)	3
	Total	14

## FOURTH YEAR Spring Semester

ABE4413C	PostHarvest Operations Engineering	3
ABE4931	Professional Issues in Ag & Biol Eng	1
ABE4043C	Agricultural & Biol Engineering Design 2	2
	Biological Sciences Electives	4
	Technical Electives (Advisor approved)	5
	Total	15

Total Credits Required 128

CURRICULUM  
BACHELOR OF SCIENCE IN AGRICULTURAL AND BIOLOGICAL ENGINEERING

Biological Engineering Specialization

FIRST YEAR Fall Semester

CHM2045	General Chemistry	3
CHM2045L	General Chemistry Lab	1
MAC2311	Analytical Geometry & Calculus I	4
	Humanities (GE)	3
	Social Science (GE)	3
	Total	14

FIRST YEAR Spring Semester

CHM2046	General Chemistry & Qualitative Analysis	3
CHM2046L	General Chemistry Lab	1
MAC2312	Analytical Geometry & Calculus II	4
ENC2210	Technical Writing	3
	Humanities (GE)	3
	Total	14

SECOND YEAR Fall Semester

PHY2048	Physics with Calculus A	3
PHY2055L	Physics with Calculus A Lab	1
CGN3421	Computer Methods in Civil Engineering or computer programming and numerical methods	4
MAC2313	Analytical Geometry & Calculus III	4
	Social Science (GE)	3
	Total	15

SECOND YEAR Spring Semester

PHY2049	Physics with Calculus B	3
PHY2056L	Physics with Calculus B Lab	1
EGM3311	Introduction to Engineering Analysis or MAP2302 Elementary Differential Equations	3
EGM2511	Engineering Mechanics-Statics	3
EML3007	Elements of Thermodynamics & Heat Transfer	3
	Humanities (GE)	3
	Total	16

GE: General Education

\* Note: Summer semesters can be used to make up General Education requirements or Lower Division (first and second year) prerequisites for your major.

## Biological Engineering Specialization

## THIRD YEAR Fall Semester

ABE3012	Introduction to Design & Anal. for Agr. Eng	3
ABE3042C	Agricultural & Biol Engineering Design 1	2
ABE3612C	Heat & Mass Transfer in Bio Sys	4
CHM2210	Organic Chemistry I	3
EGN3353C	Fluid Mechanics or	3
CWR 3201	Hydrodynamics (4)	
	Total	15

## THIRD YEAR Spring Semester

ABE3652C	Physical & Rheological Prop of Biol Materials	3
CHM2211	Organic Chemistry II	3
CHM2211L	Organic Chemistry Lab	2
EGM3400	Engineering Mechanics-Dynamics	2
	Biological Sciences (BSC2010, 2010L, 2011, 2011L)	3
	Biological Sciences Electives	2
	Total	15

## Summer Semester \*

EML3023	Computer Assisted Drafting and Design	3
EGM3520	Mechanics of Materials	3
CGN3710	Exp & Instrumentation in Civil Eng	3
	Biological Sciences Electives	3
	Total	12

## FOURTH YEAR Fall Semester

BCH4024	Intro to Biochemical & Molecular Biology or	4
BCH3025	Fundamentals of Biochemistry (4)	
	Biological Sciences Electives	4
	Engineering Electives	6
	Total	14

## FOURTH YEAR Spring Semester

ABE4931	Professional Issues in Ag & Biol Eng	1
ABE4043C	Agricultural & Biol Engineering Design 2	2
	Biological Sciences Electives	4
	Engineering Electives	6
	Total	13

Total Credits Required		128
------------------------	--	-----

CURRICULUM  
BACHELOR OF SCIENCE IN AGRICULTURAL AND BIOLOGICAL ENGINEERING

Natural Resources Conservation Engineering Specialization

FIRST YEAR Fall Semester

CHM2045	General Chemistry	3
CHM2045L	General Chemistry Lab	1
MAC2311	Analytical Geometry & Calculus I	4
	Humanities (GE)	3
	Social Science (GE)	3
	Total	14

FIRST YEAR Spring Semester

CHM2046	General Chemistry & Qualitative Analysis	3
MAC2312	Analytical Geometry & Calculus II	4
ENC2210	Technical Writing	3
	Humanities (GE)	3
	Total	13

SECOND YEAR Fall Semester

PHY2048	Physics with Calculus A	3
PHY2055L	Physics with Calculus A Lab	1
CGN3421	Computer Methods in Civil Engineering	4
	computer programming and numerical methods	
MAC2313	Analytical Geometry & Calculus III	4
	Social Science (GE)	3
	Total	15

SECOND YEAR Spring Semester

PHY2049	Physics with Calculus B	3
PHY2056L	Physics with Calculus B Lab	1
EGM3311	Introduction to Engineering Analysis or	3
MAP2302	Elementary Differential Equations	
EGM2511	Engineering Mechanics-Statics	3
EML3007	Elements of Thermodynamics & Heat Transfer	3
	Humanities (GE)	3
	Total	16

GE: General Education

\* Note: Summer semesters can be used to make up General Education requirements or Lower Division (first and second year) prerequisites for your major.

\*\* May be taken as a substitute for CHM2046. Some selective courses and graduate courses may require CHM2046 & CHM2046L as prerequisites.

## Natural Resources Conservation Engineering Specialization

## THIRD YEAR Fall Semester

ABE3012	Introduction to Design & Anal. for Agr. Eng	3
ABE3042C	Agricultural & Biol Engineering Design 1	2
ABE3612C	Heat & Mass Transfer in Bio Sys	4
EGM3400	Engineering Mechanics-Dynamics	2
EML3023	Computer Assisted Drafting and Design	3
	Total	14

## THIRD YEAR Spring Semester

ABE3652C	Physical & Rheological Prop of Biol Materials	3
CGN3501	Civil Engineering Materials	
ABE3212C	Natural Resources Conservation Engineering	4
CWR3201	Hydrodynamics	4
SUR2101C	Geomatics	3
	Technical Electives (Advisor approved)	2
	Total	16

## Summer Semester \*

EGM3520	Mechanics of Materials	3
CGN3710	Exp & Instrumentation in Civil Eng	3
ABE4231C	Irrigation Engineering	3
	Biological Sciences	
	(BSC2005, ABE2062, BSC2010 or BOT2010C)	3
	Total	12

## FOURTH YEAR Fall Semester

SOS3022	General Soils	3
SOS3022L	General Soils Lab	1
ABE4171C	Power and Machines for Biological Systems	4
	Biological Sciences Electives	3
CWR4202	Hydraulics	3
	Total	14

## FOURTH YEAR Spring Semester

ABE4233C	Drainage and Structural Design	3
ABE4931	Professional Issues in Ag & Biol Eng	1
ABE4043C	Agricultural Engineering Design 2	2
ABE4303C	Structural & Environmental Design	3
	Technical Electives (Advisor approved)	5
	Total	14
	Total Credits Required	128

**Bachelor of Science in Agricultural Operations Management  
Option A  
Production Management**

SUBJECT	CREDIT
Composition (C)	3
Humanities: Literature and the Arts/Historical and Philosophical Studies (H)	6
International Studies and Diversity (I) Double count with (H or S) (6)	
Social and Behavioral Studies (S) (9)	2
PSY 2013 F,S,SS General Psychology (S)	3
AEB 3103 F,S,SS Principles of Food & Resource Economics (S)	4
or ECO 2013 and ECO 2023 Macroeconomics and Macroeconomics (S)	
MAC 2233 or MAC 1142 Survey Calculus/Pre Calculus (M)	3
STA 3023 F,S,SS Statistics (M)	3
BSC 2005, 2005L, BSC2006 Biological Science (B)	7
CHM 2045, 2045L F,S,SS General Chemistry (P)	4
PHY 2004, 2004L, 2005 Applied Physics (P)	7
AEE 3033 F,S,SS Writing Ag & Nat Resource	
or ENC 2210 F,S,SS Tech Writing (E)	3
AEE 3030C F,S,SS Effective Oral Communication	
or SPC 2600 Public Speaking	3
ACG 2021C Intro Financial Acct	4
AGG 3333C F,S,SS PC Use in Agriculture	
or CGS 2531 Intro to Computer Prog Pkg	3
AEB 3133 F,S,SS Principles of Agribusiness Management	3
or MAN 3025 F,S,SS Principles of Management (4) (S)	
AEB 3300 F Agricultural & Food Marketing	3
or MAR 3023 F,S,SS Principle Marketing (4) (S)	
AEB 3424 F Human Resource Mgmt	3
PMA 3010 F,S Fundamentals of Pest Management	3
or ENY 3005C F,S,SS Principles of Entomology (B) (3)	
SOS 3022 F,S,SS* General Soils (P)	3
SOS 3022L F,S General Soils Lab (P)	1
AGG 3503 F,S,SS* Agriculture & Environmental Quality	3
AOM 3073 S,SS Safety in Agriculture	3
AOM 3220 F Agricultural & Construction Maintenance	3
AOM 3333 F Pesticide Application	3
AOM 3734 F, SS* Principles of Irrigation	3
or AOM 3732 S Agricultural Water Management (3)	
AOM 4314C F Power & Machinery Management	3
AOM 4444C F, SS* Electrical Power instrumentation for AOM	3
AOM 4455 S Agricultural Operation & Systems	3
or AOM 4062 F Principles of Food Engineering (4)	
AOM 4642 F Environmental Systems for Ag Structures	3
AOM 4933 F,S,SS Professional Practices	1
Ag. Science Elective	6
Approved Electives from Plan A	15
<b>TOTAL HOURS REQUIRED FOR GRADUATION</b>	<b>120 hrs</b>

Semester Offered F = Fall, S = Spring, SS = Summer

\* Alternate summers

**Bachelor of Science in Agricultural Operations Management**  
**OPTION B**  
**Manufacturing & Processing Management**

SUBJECT	CREDIT
Composition (C)	3
Humanities: Literature and the Arts/Historical and Philosophical Studies (H)	6
International Studies and Diversity (I) Double count with (H or S) (6)	
Social and Behavioral Studies (S) (9)	2
PSY 2013 F,S,SS General Psychology (S)	3
AEB 3103 F,S,SS Principles of Food & Resource Economics (S)	4
or ECO 2013 and ECO 2023	
MAC 2233 or MAC 1142 Macroeconomics and Macroeconomics (S)	3
STA 3023 F,S,SS Survey Calculus/Pre Calculus (M)	3
BSC 2005, 2005L, BSC2006 Biological Science (B)	7
CHM 2045, 2045L F,S,SS General Chemistry (P)	4
PHY 2004, 2004L, 2005 Applied Physics (P)	7
AEE 3033 F,S,SS Writing Ag & Nat Resource	
or ENC 2210 F,S,SS Tech Writing (E)	3
AEE 3030C F,S,SS Effective Oral Communication	
or SPC 2600	
ACG 2021C Public Speaking	3
AGG 3333C F,S,SS Intro Financial Acct	4
or CGS 2531	
	3
AEB 3133 F,S,SS Principles of Agribusiness Management	3
or MAN 3025 F,S,SS Principles of Management (4) (S)	
AEB 3300 F Agricultural & Food Marketing	3
or MAR 3023 F,S,SS Principle Marketing (4) (S)	
AEB 3341 F,S Strategic Selling & Tech Interface in Agribus	3
AEB 3424 F Human Resource Mgmt	3
AEB 3510 F,S,SS Quantitative Methods in Food and Resource Eco	2
FOS 3042 F,S Intro to Food Science	3
AGG 3503 F,S,SS* Agriculture & Environmental Quality	3
AOM 3073 S,SS Safety in Agriculture	3
AOM 3220 F Agricultural & Construction Maintenance	3
AOM 4062 F Principles of Food Engineering	4
AOM 4314C F Power & Machinery Management	3
AOM 4444C F, SS* Electrical Power Instrumentation for AOM	3
AOM 4455 S Agricultural Operation & Systems	3
AOM 4642 F Environmental Systems for Ag Structures	3
AOM 4933 F,S,SS Professional Practices	1
Ag. Science Elective	6
Approved Electives from Plan B	16
<b>TOTAL HOURS REQUIRED FOR GRADUATION</b>	<b>120 hrs</b>
Semester Offered F = Fall, S = Spring, SS = Summer	
* Alternate summers	



**Bachelor of Science in Agricultural Operations Management**  
**OPTION C**  
**Technical Sales & Product Support**

SUBJECT	CREDIT
Composition (C)	3
Humanities: Literature and the Arts/Historical and Philosophical Studies (H)	6
International Studies and Diversity (I) Double count with (H or S) (6)	
Social and Behavioral Studies (S) (9)	2
PSY 2013 F,S,SS General Psychology (S)	3
AEB 3103 F,S,SS Principles of Food & Resource Economics (S)	4
or ECO 2013 and ECO 2023 Macroeconomics and Macroeconomics (S)	
MAC 2233 or MAC 1142 Survey Calculus/Pre Calculus (M)	3
STA 3023 F,S,SS Statistics (M)	3
BSC 2005, 2005L, BSC2006 Biological Science(B)	7
CHM 2045, 2045L F,S,SS General Chemistry (P)	4
PHY 2004, 2004L, 2005 Applied Physics (P)	7
AEE 3033 F,S,SS Writing Ag & Nat Resource	
or ENC 2210 F,S,SS Tech Writing (E)	3
AEE 3030C F,S,SS Effective Oral Communication	
or SPC 2600 Public Speaking	3
ACG 2021C Intro Financial Acct	4
AGG 3333C F,S,SS PC Use in Agriculture	
or CGS 2531 Intro to Computer Prog Pkg	3
ADV 3000 F,S,SS Elements of Advertising	3
AEB 3123 S Law Applied to Agriculture	3
or FOS 4731 S Government Regulation and the Food Industry (2)	
AEB 3133 F,S,SS Principles of Agribusiness Management	3
or MAN 3025 F,S,SS Principles of Management (4) (S)	
AEB 3300 F Agricultural & Food Marketing	3
or MAR 3023 F,S,SS Principle Marketing (4) (S)	
AEB 3341 F,S Strategic Selling & Tech Interface in Agribus	3
AEB 3424 F Human Resource Mgmt	3
AGG 3503 F,S,SS* Agriculture & Environmental Quality	3
AOM 3073 S,SS Safety in Agriculture	3
AOM 3333 F Pesticide Application	3
AOM 3734 F, SS* Principles of Irrigation	3
or AOM 3732 S Agricultural Water Management (3)	
AOM 4314C F Power & Machinery Management	3
AOM 4444C F, SS* Electrical Power Instrumentation for AOM	3
AOM 4455 S Agricultural Operation & Systems	3
or AOM 4062 F Principles of Food Engineering (4)	
AOM 4642 F Environmental Systems for Ag Structures	3
AOM 4933 F,S,SS Professional Practices	1
Ag. Science Elective	6
Approved Electives from Plan C	16
<b>TOTAL HOURS REQUIRED FOR GRADUATION</b>	<b>120 hrs</b>

Semester Offered F = Fall, S = Spring, SS = Summer

\* Alternate summers

**Bachelor of Science in Agricultural Operations Management  
Option D  
Biological Systems Management**

SUBJECT	CREDIT
Composition (C)	3
Humanities: Literature and the Arts/Historical and Philosophical Studies (H)	6
International Studies and Diversity (I) Double count with (H or S) (6)	
Social and Behavioral Studies (S) (9)	2
PSY 2013 F,S,SS General Psychology (S)	3
AEB 3103 F,S,SS Principles of Food & Resource Economics (S)	4
or ECO 2013 and ECO 2023 Macroeconomics and Macroeconomics (S)	
MAC 2311 F,S,SS Analytical Geometry & Calculus (M)	4
STA 3023 F,S,SS Statistics (M)	3
BSC 2010, 2010L F,S,SS Integrated Principles of Biology I (B)	8
2011, 2011L F,S,SS Integrated Principles of Biology II (B)	
CHM 2045, 2045L, 2046, 2046L General Chemistry (P)	8
PHY 2053, 2055L, 2054, 2056L Applied Physics (P)	10
AEE 3033 F,S,SS Writing Ag & Nat Resource	
or ENC 2210 F,S,SS Tech Writing	3
AEE 3030C F,S,SS Effective Oral Communication	
or SPC 2600 Public Speaking	3
AGG 3333C F,S,SS PC Use in Agriculture	
or CGS 2531 Intro to Computer Prog Pkg	3
ACG 2021C Intro Financial Acct	4
AEB 3133 F,S,SS Principles of Agribusiness Management	3
or MAN 3025 F,S,SS Principles of Management (4) (S)	
ABE 3652C S Physical & Rheological Properties Bio Material	3
AGR 3303 F,S,SS Genetics	3
BCH 3025 F Fundamentals of Biochemistry	4
CHM 2210 F,S,SS Organic Chemistry and Lab	3
CHM 2211 F,S,SS Organic Chemistry	3
CHM 2211L F,S,SS Organic Chemistry Lab	2
FOS 3042 F,S Intro to Food Science	3
MCB 3020 F,S,SS Basic Biology of Microorganisms	3
MCB 3020L F,S,SS Lab for Basic Biology of Microorganisms	2
AGG 3503 F,S,SS* Agriculture & Environmental Quality	3
AOM 3073 S,SS Safety in Agriculture	3
AOM 4062 F Principles of Food Engineering	4
AOM 4444C F, SS* Electrical Power Instrumentation for AOM	3
AOM 4455 S Agricultural Operation & Systems	3
AOM 4933 F,S,SS Professional Practices	1
Ag. Science Elective	6
Approved Electives from Plan D	4
TOTAL HOURS REQUIRED FOR GRADUATION	120 hrs

Semester Offered F = Fall, S = Spring, SS = Summer

\* Alternate summers

**Bachelor of Science in Agricultural Operations Management**  
**OPTION E**  
**Environmental Systems Management**

SUBJECT	CREDIT
Composition (C)	3
Humanities: Literature and the Arts/Historical and Philosophical Studies (H)	6
International Studies and Diversity (I) Double count with (H or S) (6)	
Social and Behavioral Studies (S) (9)	2
PSY 2013 F,S,SS General Psychology (S)	3
AEB 3103 F,S,SS Principles of Food & Resource Economics (S)	4
or ECO 2013 and ECO 2023 Macroeconomics and Macroeconomics (S)	
MAC 2311 F,S,SS Analytical Geometry & Calculus (M)	4
STA 3023 F,S,SS Statistics (M)	3
BSC 2010, 2010L F,S,SS Integrated Principles of Biology I (B)	8
2011, 2011L F,S,SS Integrated Principles of Biology II (B)	
CHM 2045, 2045L, 2046, 2046L General Chemistry (P)	8
PHY 2053, 2055L, 2054, 2056L Applied Physics (P)	10
AEE 3033 F,S,SS Writing Ag & Nat Resource	
or ENC 2210 F,S,SS Tech Writing	3
AEE 3030C F,S,SS Effective Oral Communication	
or SPC 2600 Public Speaking	3
AGG 3333C F,S,SS PC Use in Agriculture	
or CGS 2531 Intro to Computer Prog Pkg	3
ACG 2021C Intro Financial Acct	4
AEB 3123 S Law Applied to Agriculture	3
AEB 3133 F,S,SS Principles of Agribusiness Management	3
or MAN 3025 F,S,SS Principles of Management (4) (S)	
AEB 3424 F,S,SS Human Resource Management in Agribusiness	3
ABE 4660 S Bio Process Microbiology	3
EES 3000 F,S Environmental Science & Humanity	3
EES 4102 F Environmental Biology	2
EES 4200 F,S Environmental Chemistry of Carbon Compounds	2
PMA 3010 F,S Fundamentals of Pest Management	3
SOS 3022 F,S,SS* General Soils (P)	3
AGG 3503 F,S,SS* Agriculture & Environmental Quality	3
AGG 3535 Agricultural Ecology	3
or PCB 3043C, EES 4103 Intro to Ecology (4), Applied Ecology (2)	
AOM 3073 S,SS Safety in Agriculture	3
AOM 3333 F Pesticide Application	3
AOM 3734 F, SS* Principles of Irrigation	3
or AOM 3732 S Agricultural Water Management (3)	
AOM 4062 F Principles of Food Engineering	4
AOM 4933 F,S,SS Professional Practices	1
Ag. Science Elective	6
Approved Electives from Plan E	5
TOTAL HOURS REQUIRED FOR GRADUATION	120 hrs

Semester Offered F = Fall, S = Spring, SS = Summer

\* Alternate summers

## FLORIDA SECTION ASAE

[History](#)

[List of Officers](#)

[Awards](#)

[Photographs](#)

**44th ANNIVERSARY**

**1953 --- 1997**

**FLORIDA SECTION**

**AMERICAN SOCIETY OF AGRICULTURAL ENGINEERS**



***Compiled by Allen R. Overman***

***March 1997***

## Florida Section – American Society of Agricultural Engineers

### Introduction

This brief report was compiled to give members a perspective on some past activities of the Section. Included are a complete list of officers and nearly complete list of meeting places. A group of people met in Gainesville in 1953 to form the Florida Section and elect officers, so we can consider 1997 the 44th year of Florida ASAE. This coincides with the 90th year for national ASAE. As we approach the new millenium, this material can be useful in taking stock of our past and planning our future.

### Beginnings

The American Society of Agricultural Engineers (ASAE) was formed at the University of Wisconsin in 1907, with 18 charter members. So, 1997 represents the 90th anniversary of ASAE. J. B. Davidson served as the first president. The history of ASAE over the first 70 years has been published (Stewart, 1977). The constitution read: *"The object of this Society shall be to promote the art and science of engineering as applied to agriculture."* In 1975 ASAE adopted long-range goals *"To lead in developing and implementing engineering technology for agriculture that will optimally serve human needs and aspirations both now and in the future"*. Further modifications of purpose and mission were developed, as shown by the attachment in this report. A recent report (Schulz, 1996) lists 7,058 regular members (not including student members). The categories and percentages of total were: Power & Machinery–37.3%, Soil & Water – 27.6%, Structures & Environment – 11.3%, Food & Process Engineering – 9.5%, Information & Electrical Technologies – 7.6%, Bioengineering – 1.4%, Aquacultural Engineering – 0.8%, and other – 3.6%. The Florida Section had the sixth largest size, with 219 members.

### Florida Section

The Florida Section ASAE was organized in 1953 after preliminary discussions in Gainesville during 1952. Tom Hancock of Jacksonville served as the first chair. Gary Bethune of Tampa serves as the current chair. A complete list of officers is included in the report, along with meeting places. Many members have contributed time, energy, and resources to this volunteer organization over the years. Appreciation of our heritage can help us continue the work and plan for the future. A high priority is to enhance marketing of our profession in Florida with industry, engineering, and public agencies. A major highlight of the Section

is the annual meeting which provides opportunity for networking and exchange of information.

### Academic Programs in Florida

The first academic program in Agricultural Engineering was established at the University of Florida (UF) within the College of Agriculture in 1923 (Pettis et al., 1974). Professor Frazier Rogers served as first chair. In 1947 the mission of the department was expanded to include teaching, research, and extension. New faculty who joined Prof. Frazier Rogers and J. M. Johnson in 1947 included: R. E. Choate, J. M. Myers, A. M. Pettis, and T. C. Skinner. Numerous faculty have been hired since that time. In 1950 a B. S. in Agricultural Engineering through the College of Engineering was approved. Individual chairs and their periods of service include: Frazier Rogers (1918–1958), Drayton Kinard (1958–1968), Ernest Smerdon (1968–1973), Gerald Zachariah (1975–1980), Gerald Isaacs (1981–1991), Otto Loewer (1992–1996), and Direlle Baird (1996–present). Rush Choate and Direlle Baird have both served as Acting Chair. The name of the department has been changed to Agricultural & Biological Engineering (ABE).

A program in Biological & Agricultural Systems Engineering (BASE) was authorized by the Board of Regents at Florida A & M University (FAMU) in 1996. The program is designed to integrate the agricultural, biological, engineering, and environmental sciences. The goal is to achieve ABET accreditation by the year 2001. Plans are to have 5 faculty and 75 students by that time. In the Fall semester of 1996 there were 18 students enrolled. Dr. Charles Magee is chair of the department.

### References

- Pettis, A. M., R. E. Choate, T. Duff, J. M. Myers, C. J. Rogers, L. N. Shaw, and T. C. Skinner. 1974. Fifty Years of Agricultural Engineering at the University of Florida: 1923–1973. Agricultural Engineering Department, University of Florida. Gainesville, FL 32611.
- Schulz, J. 1996. Report to the Membership Council. American Society of Agricultural Engineers. St Joseph, MI 49085.
- Stewart, R. E. 1979. Seven Decades that Changed America: A History of the American Society of Agricultural Engineers 1907–1977. American Society of Agricultural Engineers. St Joseph, MI 49085.

## Introduction to the American Society of Agricultural Engineers

### Society Definition

The Society is a professional and technical organization of members worldwide, who are dedicated to the advancement of engineering applicable to agriculture and other biological systems, including the environment and natural resources, and to associated industries.

### Society Purpose

To advance the science and application of engineering to agriculture and other biological systems and to enhance the development of members, assisting them in serving humankind in a professional manner.

### Society Missions

- I. *Network:* Be the focal point for a network of people worldwide.

The Society is recognized worldwide as a home for experts in engineering topics relating to agricultural and other biological systems, including the environment and natural resources, and to associated industries. Members find opportunities to lead, contribute to, and keep pace with developments worldwide in these and related emerging topics.

- II. *Professional Development:* Develop and strengthen the profession, enrich the competence of practitioners, and promote professionalism.

The Society establishes standards for education and registration, and sets expectations for professional conduct and ethical behavior. The Society supports and offers opportunities for life-long learning that enriches personal and professional skills and enhances awareness concerning environmental and societal issues.

- III. *Information and Technology:* Be a major source for engineering information, technologies, and ideas.

The Society is a source of high quality technical information. Its members practice, transfer, and advance the science and application of engineering to agricultural and other biological systems, including the environment and natural resources, and associated industries.



- IV. **Standards:** Be a world center for engineering standards and practices for agricultural and biological systems and associated industries.

The Society is known to be a primary developer and publisher of up-to-date national and international standards and practices. The Society is a prime mover in promoting the use and acceptance of international standards.

- V. **Public Affairs:** Be proactive and contemporary in addressing issues related to the profession.

Humankind calls upon the Society members for expertise in addressing the vital issues of farm safety; food security; food quality and food safety; natural resources and environmental stewardship; and a sustainable and harmonized universal ecosystem.

- VI. **Vitality:** Strengthen and support vitality.

The Society is a dynamic organization whose members are enthusiastic and committed to the purposes and missions of the Society. The leadership is active and accountable to its members.

## FLORIDA ASAE MEETING TIMES &amp; PLACES (Compiled by A.R. Overman, 04/96)

<u>Time</u>	<u>Meeting Place</u>	<u>VC Programs</u>	
?/54	Gainesville	H. C. Adcock	
10/55	Gainesville	I. S. Exley	
?/56	Jacksonville	R. E. Choate	
?/57	?	J. W. Randolph	
?/58	?	S. J. Folks	
04/59	West Palm Beach	D. E. Adams	
?/60	?	S. E. Dowling	
04/61	Daytona Beach	R. E. Choate	
?/62	?	I. S. Exley	
?/63	?	A. M. Pettis	
?/64	?	W. H. Parady	
?/65	?	M. H. Byrom	
06/66	St Petersburg Beach	G. E. Coppock	
05/67	Winter Park	B. C. Beville	
05/68	Winter Park	H. L. Clevenger	
06/69	Cocoa Beach	L. Hart Jr	(joint with GA)
07/70	Jekyll Island, GA	J. E. Clayton	(joint with GA)
05/71	Winter Park	C. J. Rogers	
05/72	Disney World	J. D. Whitney	(joint with GA)
04/73	Gainesville	W. R. Holmes	
06/74	St Petersburg Beach	W. W. Dean Jr	
05/75	Altamonte Springs	J. J. Gafney	
06/76	Deerfield Beach	L. B. Baldwin	
05/77	Altamonte Springs	D. E. Buffington	
05/78	Clearwater Beach	C. D. Baird	
05/79	Winter Park	L. N. Shaw	
05/80	Orlando	A. F. Robertson	
05/81	Orlando	W. M. Miller	
05/82	Daytona Beach	C. L. Franks	
06/83	Orlando	S. L. Hedden	
05/84	Clearwater Beach	L. O. Bagnall	
05/85	Vero Beach	F. P. McIntosh	
05/86	Orlando	G. T. Baragona	
05/87	Longboat Key	A. B. Bottcher	
04/88	Longboat Key	J. T. Westgate	
04/89	Vero Beach	W. D. Shoup	
04/90	Orlando	M. D. Lane	
04/91	Jacksonville	A. G. Smajstrla	(joint with GA)
04/92	Cocoa Beach	J. W. Mishoe	
04/93	Cocoa Beach	L. E. Lindahl	
04/94	Orlando	W. D. Graham	
05/95	Key Largo	E. R. Muller	
05/96	St Petersburg Beach	B. R. McMahon	
05/97	Cocoa Beach	A. R. Overman	(joint with SWCS)

## Florida Section ASAE Membership Data

<u>Year</u>	<u>Members</u>	<u>Year</u>	<u>Members</u>
1954 1st ed.	67	1981	181
1955	71	1982	195
1956	72	1983	218
1957	75	1984	?
1958	77	1985	232
1959	92	1986	240
1960	91	1987	265
1961	100	1988	217
1962	106	1989	256
1963	109	1990	266
1964	112	1991	265
1965	119	1992	265
1966	137	1993	257
1967	131	1994	263
1968	128	1995	317
1969	122	1996	246
1970	112	1997	258
1971	135	1998	
1972	145	1999	
1973	146	2000	
1974	150		
1975	177		
1976	163		
1977	154		
1978	159		
1979	—		
1980	181		

Data were obtained from the ASAE Yearbooks and Member Rosters.  
Compiled by A. R. Overman 9/97.

## FLORIDA SECTION ASAE - OFFICERS

<u>Officer</u>	<u>1953 - 54</u>	<u>1954 - 55</u>	<u>1955 - 56</u>	<u>1956 - 57</u>
Chair	T.E. Hancock	J.M. Johnson	T.C. Skinner	W.J. Eichelberger
VC Program	H.C. Adcock	I.S. Exley	J.B. Cocke R.E. Choate	J.W. Randolph
VC Membership	G.M. Wedgeworth	D.G. Smith	T.W. Peacock	L.C. Brenner Jr
VC Publicity	D.E. Adams	L.E. Strickland	C.H. Smith	H.E. Glover
Secretary	J.M. Johnson	R.E. Choate	A.M. Pettis	J.M. Myers
Treasurer	T.C. Skinner	J.B. Cocke	W.J. Eichelberger	C.J. Rogers
<u>Officer</u>	<u>1957 - 58</u>	<u>1958 - 59</u>	<u>1959 - 60</u>	<u>1960 - 61</u>
Chair	R.C. Lambert	D.S. Harrison	D.E. Adams	S.E. Dowling
VC Program	S.J. Folks	D.E. Adams	S.E. Dowling	R.E. Choate
VC Membership	B.E. Wiggins	M.H. Byrom	H.C. Nelson	R.E. Hellwig P.J. Jutras
VC Publicity	D.S. Harrison	C.W. Davis	R.E. Hellwig	D.P. Poulosom
Secretary	S.E. Dowling	S.E. Dowling	E.S. Holmes	A.M. Pettis
Treasurer	J.B. Richardson	H.C. Nelson	W.H. Parady	W.H. Parady
<u>Officer</u>	<u>1961 - 62</u>	<u>1962 - 63</u>	<u>1963 - 64</u>	<u>1964 - 65</u>
Chair	R.E. Choate	I.S. Exley	A.M. Pettis	W.H. Parady M.H. Byrom
VC Program	I.S. Exley	A.M. Pettis	W.H. Parady	M.H. Byrom
VC Membership	E.S. Holmes	W.H. Parady	C.J. Rogers	G.E. Coppock
VC Publicity	H.C. Nelson	M.H. Byrom	J.R. Saunders	J.R. Saunders
Secretary	A.M. Pettis	D. S. Harrison	D.S. Harrison	I.J. Ross
Treasurer	M.H. Byrom	J.R. Saunders	G.E. Coppock	B.C. Beville
<u>Officer</u>	<u>1965-66</u>	<u>1966-67</u>	<u>1967-68</u>	<u>1968-69</u>
Chair	M.H. Byrom J.R. Saunders G.E. Coppock	G.E. Coppock	B.C. Beville	H.L. Clevenger
VC Program	J.R. Saunders	B.C. Beville	H.L. Clevenger	L. Hart Jr
VC Membership	G.E. Coppock	I.J. Ross	L. Hart Jr	J.E. Clayton
VC Publicity	B.C. Beville	H.L. Clevenger	J.E. Clayton	C.J. Rogers
Secretary	I.J. Ross	J.F. Beeman	C.J. Rogers	R.C. Fluck
Treasurer	W.C. Ireland	C.J. Rogers L. Hart Jr	D.J. Williams	W.W. Deen Jr
<u>Officer</u>	<u>1969-70</u>	<u>1970-71</u>	<u>1971-72</u>	<u>1972-73</u>
Chair	L. Hart Jr	J.E. Clayton	C.J. Rogers	J.D. Whitney
VC Program	J.E. Clayton	C.J. Rogers	J.D. Whitney	W.R. Holmes
VC Membership	C.J. Rogers	W.W. Deen Jr	W.R. Holmes	M.F. Jones
VC Publicity	W.W. Deen Jr	J.D. Whitney	D.T. Kinard	J.A. Lee
Secretary	J.D. Whitney	J.J. Gaffney	L.N. Shaw	R.A. Nordstedt
Treasurer	W.R. Holmes	H.R. Heath	J.A. Lee	J.D. Eller
<u>Officer</u>	<u>1973-74</u>	<u>1974-75</u>	<u>1975-76</u>	<u>1976-77</u>
Chair	W.R. Holmes	W.W. Deen Jr	J.J. Gaffney	J.M. Myers
VC Program	W.W. Deen Jr	J.J. Gaffney	L.B. Baldwin	J.D. Eller D.E. Buffington
VC Membership	J.J. Gaffney	J.D. Eller	L.N. Shaw	S.L. Hedden
VC Publicity	J.D. Eller	L.B. Baldwin	D.E. Buffington	C.D. Baird
Secretary	L.B. Baldwin	D.E. Buffington	S.L. Hedden	D.W. Zimmerman
Treasurer	J.M. Stanley	D.W. Zimmerman	A.F. Robertson	G.E. Rauth

<u>Officer</u>	<u>1977-78</u>	<u>1978-79</u>	<u>1979-80</u>	<u>1980-81</u>
Chair	J.A. Lee	D.E. Buffington	J.D. Eller	L.N. Shaw
VC Program	C.D. Baird	L.N. Shaw	A.F. Robertson	W.M. Miller
VC Membership	D.E. Buffington	C.D. Baird	D.W. Zimmerman	C.L. Franks
VC Publicity	L.O. Bagnall	K.L. Campbell	W.M. Miller	B.C. Beville
Secretary	A.F. Robertson	L.E. Lindahl	C.L. Franks	C.D. Baird
Treasurer	L.E. Lindahl	S.E. Dowling	M.F. Jones	F.P. McIntosh
		C.L. Franks		
<u>Officer</u>	<u>1981-82</u>	<u>1982-83</u>	<u>1983-84</u>	<u>1984-85</u>
Chair	A.F. Robertson	C.D. Baird	G.E. Rauth	L.O. Bagnall
VC Program	C.L. Franks	S.L. Hedden	L.O. Bagnall	F.P. McIntosh
VC Membership	W.M. Miller	G.E. Rauth	F.P. McIntosh	J. Tichenor
VC Publicity	K.V. Chau	M.T. Talbot	G.T. Baragona	W.J. Becker
			W.D. Shoup	
Secretary	F.P. McIntosh	G.T. Baragona	J. Tichenor	D.P. Block
Treasurer	G.T. Baragona	W.M. Miller	A.B. Bottcher	A.B. Bottcher
<u>Officer</u>	<u>1985-86</u>	<u>1986-87</u>	<u>1987-88</u>	<u>1988-89</u>
Chair	F.P. McIntosh	W.M. Miller	A.B. Bottcher	G.T. Baragona
VC Program	G.T. Baragona	A.B. Bottcher	J.T. Westgate	W.D. Shoup
VC Membership	L.E. Lindahl	J.T. Westgate	W.J. Becker	M.D. Lane
VC Publicity	A.R. Overman	R.A. Bucklin	T.C. Skinner	G.A. Clark
Secretary	J.T. Westgate	M.D. Lane	S.L. Hedden	B.R. McMahon
Treasurer	J.C. Webb	J.C. Webb	A.G. Smajstrla	A.G. Smajstrla
<u>Officer</u>	<u>1989-90</u>	<u>1990-91</u>	<u>1991-92</u>	<u>1992-93</u>
Chair	W.D. Shoup	M.D. Lane	A.G. Smajstrla	J.W. Mishoe
VC Program	M.D. Lane	A.G. Smajstrla	J.W. Mishoe	L.E. Lindahl
VC Membership	G.A. Clark	P.L. Coultas	E.R. Muller	R.A. Bucklin
VC Publicity	B.R. McMahon	W.D. Graham	D.G. Watson	A.R. Overman
VC Awards	--	--	D.Z. Haman	R.E. Choate
VC Continuing Ed	--	A.R. Overman	A.R. Overman	J. Janney
Secretary	A.G. Smajstrla	T. Schanze	P.L. Coultas	M.N. Allhands
Treasurer	S.L. Hedden	S.L. Hedden	D.R. Piercefield	D.R. Piercefield
Past Chair	G.T. Baragona	W.D. Shoup	M.D. Lane	A.G. Smajstrla
<u>Officer</u>	<u>1993-94</u>	<u>1994-95</u>	<u>1995-96</u>	<u>1996-97</u>
Chair	L.E. Lindahl	W.D. Graham	E.R. Muller	G.P. Bethune
VC Program	W.D. Graham	E.R. Muller	B.R. McMahon	A.R. Overman
VC Membership	B.R. McMahon	B.C. Kauffman	G.P. Bethune	B.K. Jacobsen
VC Publicity	P.L. Coultas	R.E. Fortson	B.C. Kauffman	L.B. Collins
VC Awards	R.E. Choate	R.A. Nordstedt	R.A. Nordstedt	J.D. Leary
VC Continuing Ed	E.R. Muller	M.P. Holloway	R.E. Fortson	B.L. Roy
Secretary	B.C. Kauffman	P.V. Kirby	P.H. Jones	W.R. Reck
Treasurer	G.P. Bethune	G.P. Bethune	P.V. Kirby	P.V. Kirby
Past Chair	J.W. Mishoe	L.E. Lindahl	W.D. Graham	E.R. Muller

<b>Officer</b>	<b>1997-98</b>	<b>1998-99</b>	<b>1999-2000</b>	<b>2000-2001</b>
<b>Chair</b>	A. R. Overman	P.V. Kirby		
<b>VC Program</b>	P.V. Kirby	B.L. Roy		
<b>VC Membership</b>	S.L. Dobbs	B.L. Broxterman		
<b>VC Publicity</b>	C. Fall	S.L. Dobbs		
<b>VC Awards</b>	M.R. Gebhardt	M.P. Holloway		
<b>VC Continuing Ed</b>	B.L. Roy	B.R. McMahon		
<b>Secretary</b>	T.C. Perry	C. Fall		
<b>Treasurer</b>	B.K. Jacobson	W.R. Reck		
<b>Past Chair</b>	G.P. Bethune	A.R. Overman		

## FLORIDA SECTION ASAE AWARDS

### SECTION CHAIR

<u>Year</u>	<u>Name</u>	<u>Year</u>	<u>Name</u>
1953-54	T. E. Hancock	1977-78	J. A. Lee
1954-55	J. M. Johnson	1978-79	D. E. Buffington
1955-56	T. C. Skinner	1979-80	J. D. Eller
1956-57	W. J. Eichelberger	1980-81	L. N. Shaw
1957-58	R. C. Lambert	1981-82	A. F. Robertson
1958-59	D. S. Harrison	1982-83	C. D. Baird
1959-60	D. E. Adams	1983-84	G. E. Rauth
1960-61	S. E. Dowling	1984-85	L. O. Bagnall
1961-62	R. E. Choate	1985-86	F. P. McIntosh
1962-63	I. S. Exley	1986-87	W. M. Miller
1963-64	A. M. Pettis	1987-88	A. B. Bottcher
1964-65	W. H. Parady	1988-89	G. T. Baragona
1965-66	M. H. Byrom	1989-90	W. D. Shoup
1966-67	G. E. Coppock	1990-91	M. D. Lane
1967-68	B. C. Beville	1991-92	A. G. Smajstria
1968-69	H. L. Clevenger	1992-93	J. W. Mishoe
1969-70	L. Hart Jr	1993-94	L. E. Lindahl
1970-71	J. E. Clayton	1994-95	W. D. Graham
1971-72	C. J. Rogers	1995-96	E. R. Muller
1972-73	J. D. Whitney	1996-97	G. P. Bethune
1973-74	W. R. Holmes	1997-98	A. R. Overman
1974-75	W. W. Dean Jr		
1975-76	J. J. Gaffney		
1976-77	J. M. Myers		

**FLORIDA SECTION ASAE AWARDS****YOUNG ENGINEER AWARD**

<u>Year</u>	<u>Name</u>
1987	Michael Lane
1988	Allen Smajstrla
1989	Brian McMahon
1990	Fedro Zazueta
1991	Eldon Muller
1992	Ireneuz Debicki
1993	Patrick Kirby
1994	Greg Brubaker
1995	Peter Coultas
1996	Wendy Graham
1997	Tommy Perry
1998	Michael Holloway

**DISTINGUISHED ACHIEVEMENT**

<u>Year</u>	<u>Name</u>
1991	Gerald Isaacs
1992	Gerald Zachariah (posthumously)
1993	Dale Zimmerman
1998	Rush Choate



**FLORIDA SECTION ASAE AWARDS****OUTSTANDING SERVICE**

<u>Year</u>	<u>Name</u>
1960	McGregor Smith
1960	Gert Schmidt
1960	Howard Shannon
1960	O. R. Minton
1961	Buster Hancock
1962	Willard Fifield
1964	Tom Skinner
1968	Tom Hancock
1968	Gert Schmidt
1971	Rush Choate
1972	Ernest Smerdon
1975	Dalton Harrison
1977	Mostella Myers
1977	James Lee
1978	Luther Hart
1978	Gerald Zachariah
1979	Clarence Rogers
1979	Jodie Whitney
1981	Jerome Gaffney
1981	Larry Clevenger
1982	Meryl Todd
1987	William Holmes
1987	Freddie McIntosh
1987	John Feightner
1988	Dale Zimmerman
1988	Direlle Baird
1989	Scott Hedden
1990	William Miller
1991	Glen Rauth (posthumously)
1993	Dayne Piercefield
1994	Marcus Allhands
1995	John Sager
1996	Jesse Wilson
1997	Del Bottcher
1998	Lennart Lindahl

## FLORIDA SECTION OUTSTANDING SENIOR AWARD

<u>Year</u>	<u>Major</u>	<u>Name</u>
1979	AGE	Hugo A. Carter
1980	AGE	Kenneth D. Konyha
1980	AGE	Gary A. Clark
1980	AGE	Julio A. Sanchez
1981	AGE	Paul E. Faeth
1981	MAG	John H. Weldon
1982	MAG	Michael K. Allbritton
1982	AGE	Deborah M. Moran
1983	MAG	Kevin Hallon Hurst
1983	AGE	Kirk David Dolan
1984	MAG	William W. Bailey Jr
1984	AGE	Timothy J. Kelly
1985	AGE	Jeffrey F. Payne
1985	MAG	W. Albert Byrd Jr
1986	AGE	Lori E. Woeste
1986	MAG	Brian K. Cardin
1987	AOM	Frederick Odom
1987	AGE	Douglas L. Dycus
1988	AGE	Daniel Downey
1988	AOM	Stephen M. Cochrane
1989	AOM	Dndrew G. Nichols
1989	AGE	Michael P. Holloway
1990	AGE	William R. Reck
1990	AOM	A. Allan Teixeira
1991	AOM	Gregory J. Holmberg
1991	AGE	Lisa M. Bean
1992	AGE	Denise M. Shelton
1992	AOM	Julie A. Stocker
1993	AOM	Jennifer L. Brunty
1993	AGE	Marcus S. Turner
1994	AGE	Jason G. Strenth
1994	AOM	Audie Gaylance Ham
1994	AOM	Frederick S. Royce
1995	AOM	Carol Petrone
1995	AGE	Steven Vantoorenburg
1996	AGE	Charles Scott Thourot
1996	AOM	B. J. Lackey
1997	AOM	Julio C. Montealegre
1997	ABE	Mandy L. Morin



**Thomas Hancock**  
Chair, Florida Section ASAE  
1953-1954



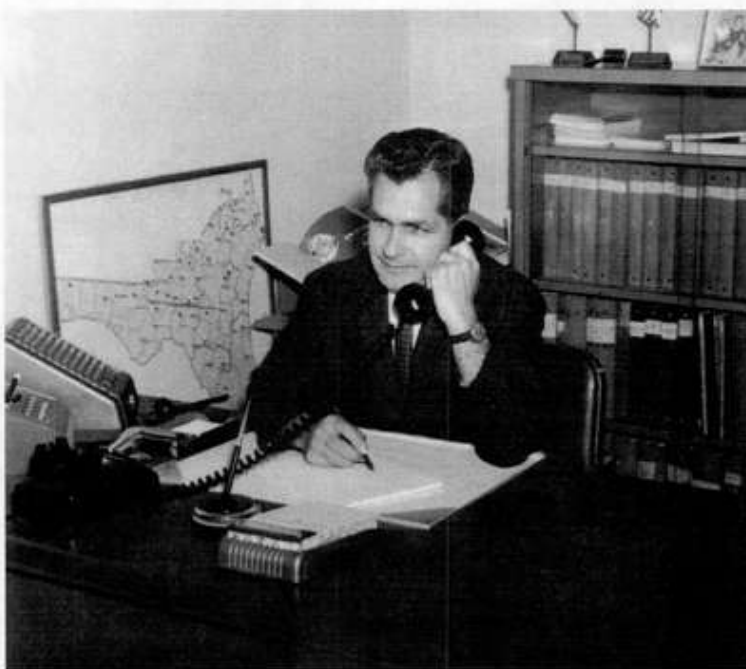
**John Johnson**  
Chair, Florida Section ASAE  
1954-1955



**Thomas Skinner**  
Chair, Florida Section ASAE  
1955-1956



**Walter Eichelberger**  
Chair, Florida Section ASAE  
1956-1957



**Ralph Lambert**  
Chair, Florida Section ASAE  
1957-1958



**Dalton Harrison**  
Chair, Florida Section ASAE  
1958-1959





**Don Adams**  
Chair, Florida Section ASAE  
1959-1960



**Elmo Dowling**  
Chair, Florida Section ASAE  
1960-1961



**Ray Pettis**  
Chair, Florida Section ASAE  
1963-1964